



Rhode Island State Innovation Model (SIM) Test Grant

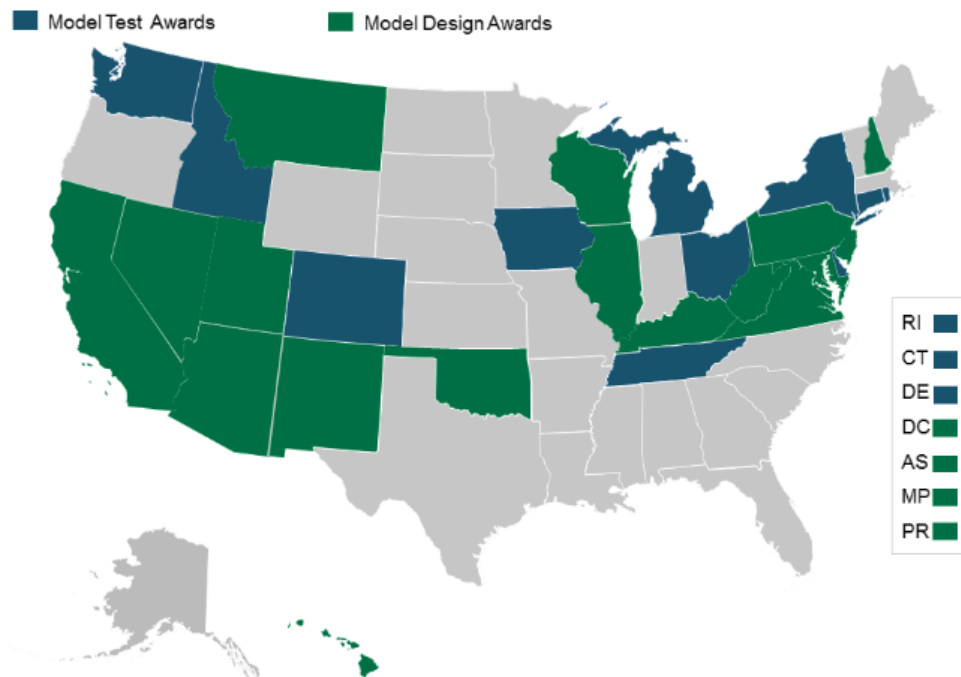
Pursuing Healthcare Transformation

Overview Presentation

April 2017

SIM Background

- \$20 million grant from the Centers for Medicare and Medicaid Services (CMS)
- Transforms the way we deliver and pay for healthcare
- Enhances the way individuals are engaged in their health



SIM Leadership

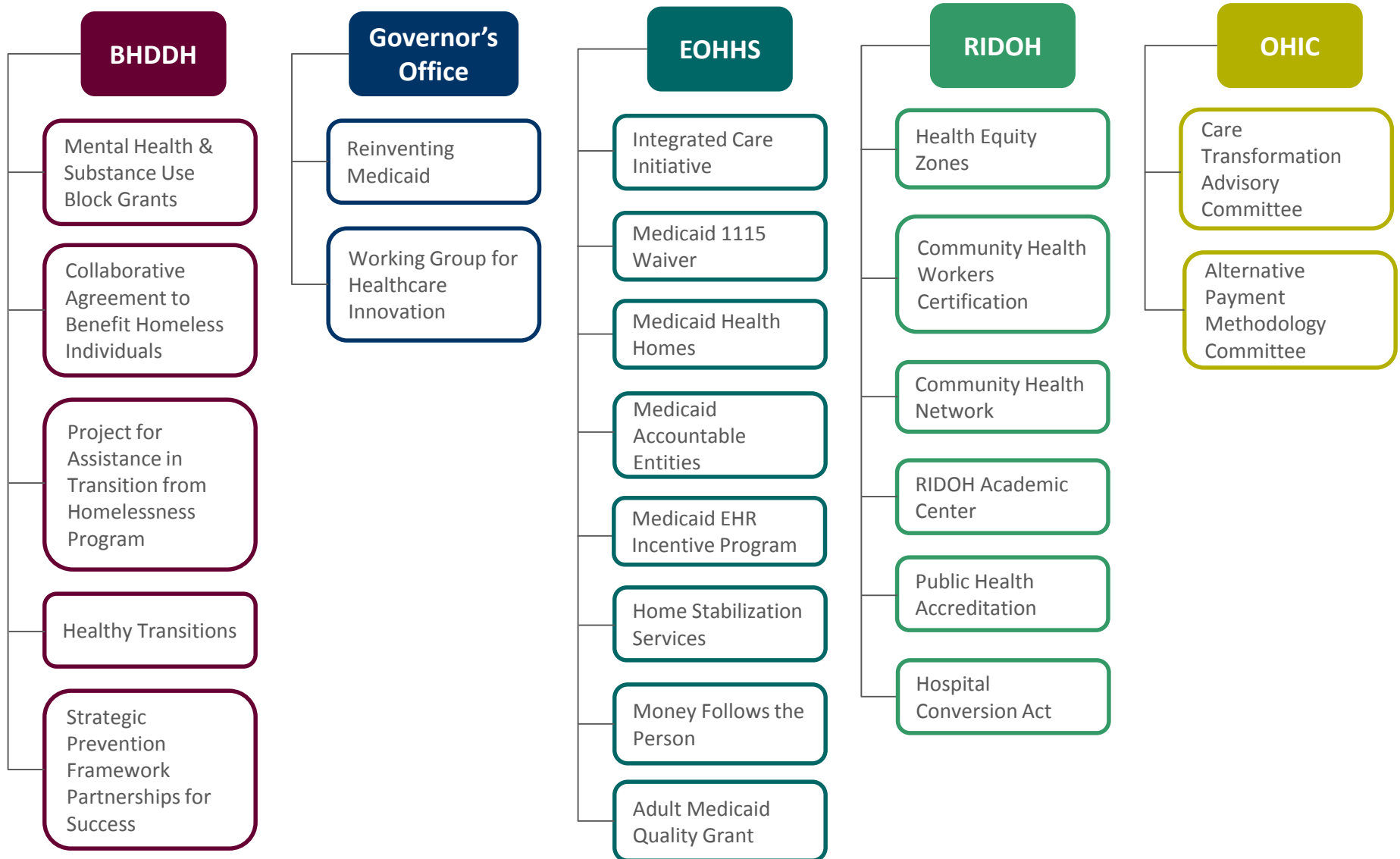
- SIM Steering Committee
- Interagency Team
- Director Marti Rosenberg
- Core Staff Team



Medicaid



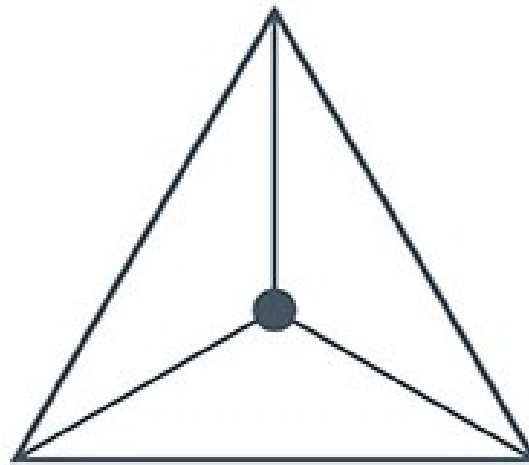
SIM Alignment with Other Initiatives



The Ultimate Goal

Adapting the Triple Aim

Healthier People

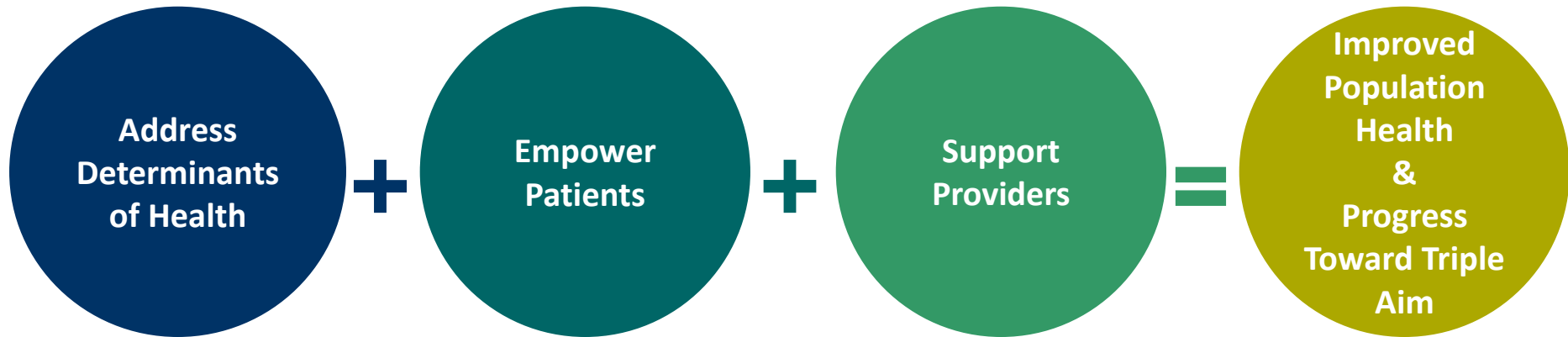


Better Care

Smarter Spending

Adapted from Institute for Healthcare Improvement, 2012

SIM Theory of Change



What is Health?

“A state of complete physical, mental and social well-being and not merely the absence of disease or infirmity.”



“Health is created where we live, learn, work, and play.”

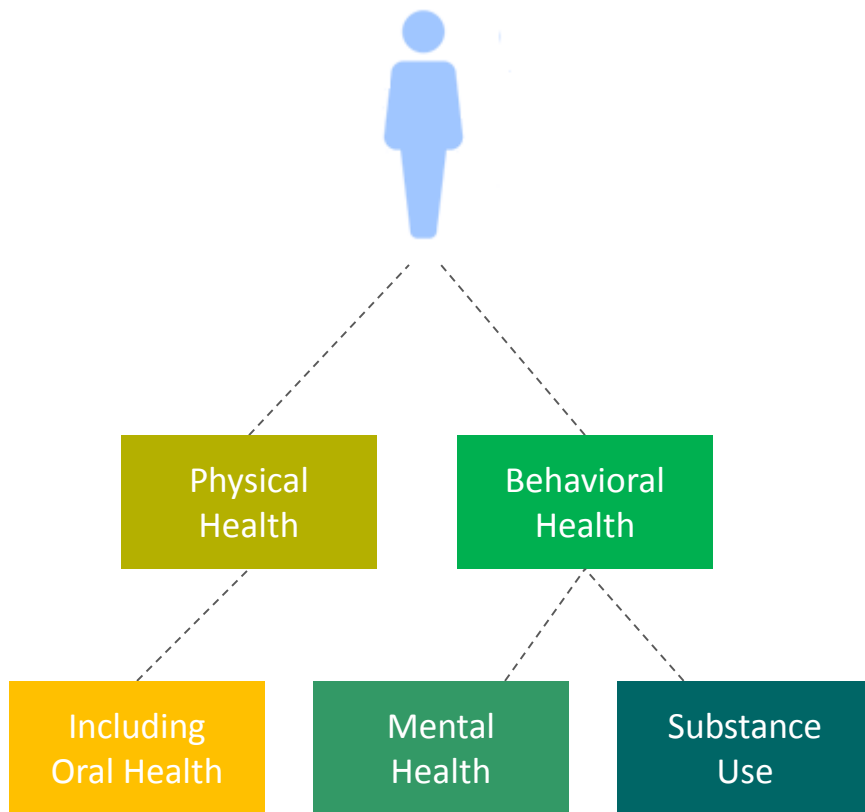


“Health equity [...] is when everyone has the opportunity to attain their full health potential.”

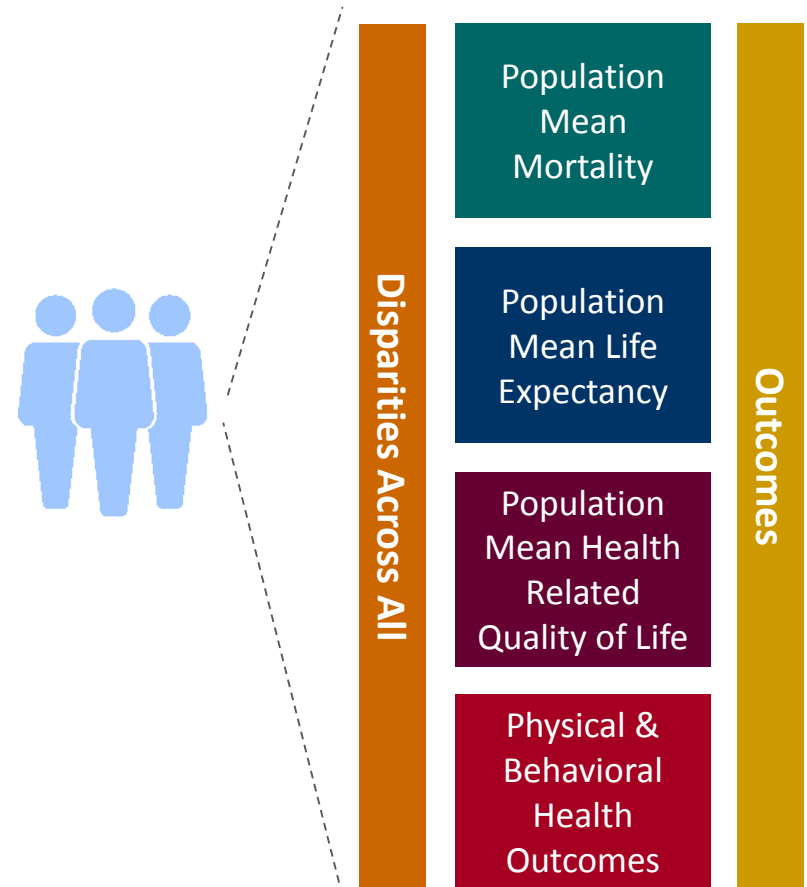


What is Population Health?

Considering the Whole Person

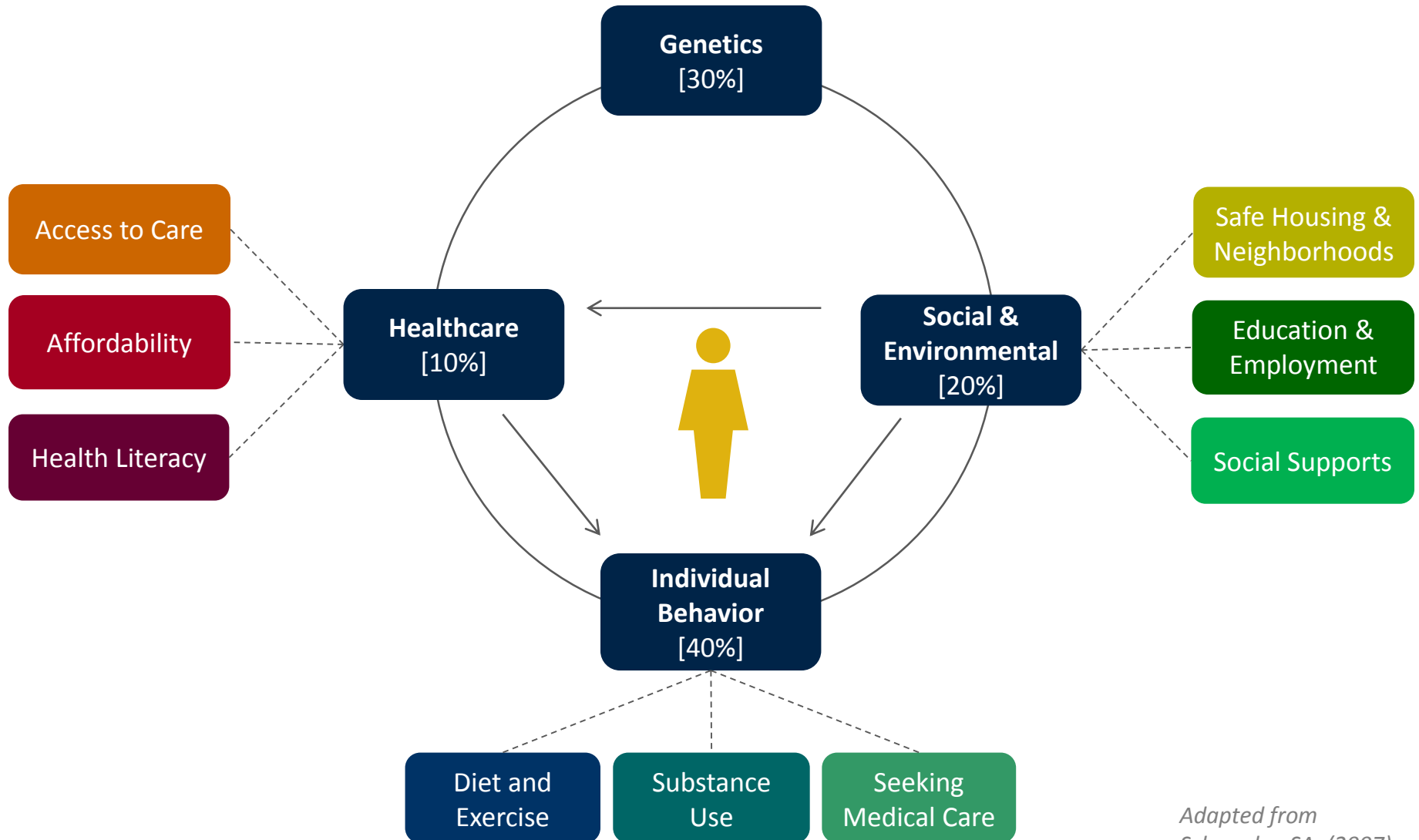


The Health of Populations



What determines health?

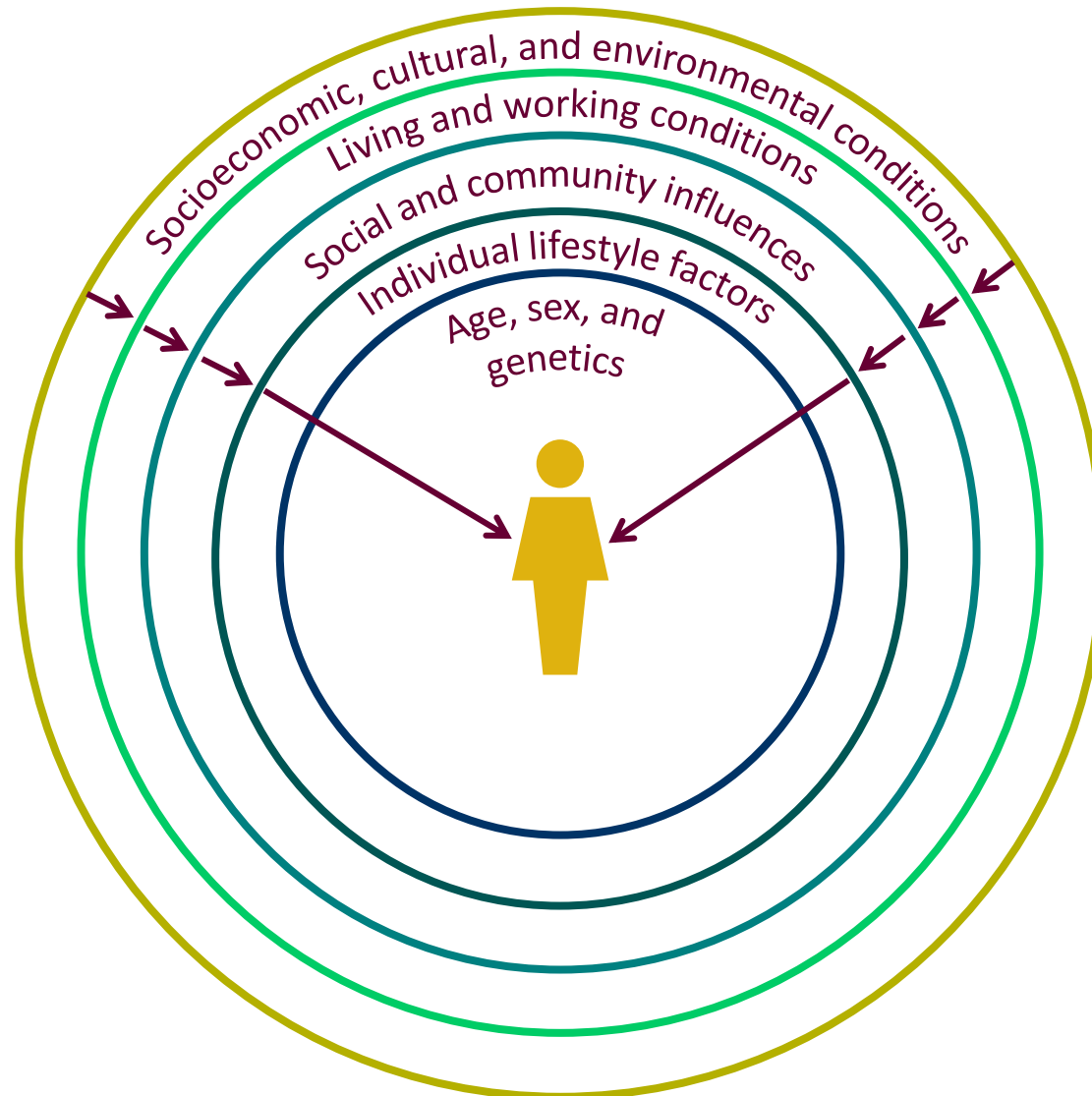
Determinants of Health



Adapted from Schroeder, SA. (2007).

What determines Population Health?

Social Ecological Model of Health



Adapted from Dahlgren & Whitehead, (1992).

SIM Strategies



Planning & Aligning for a Healthy Population



Linking Payment to Outcomes

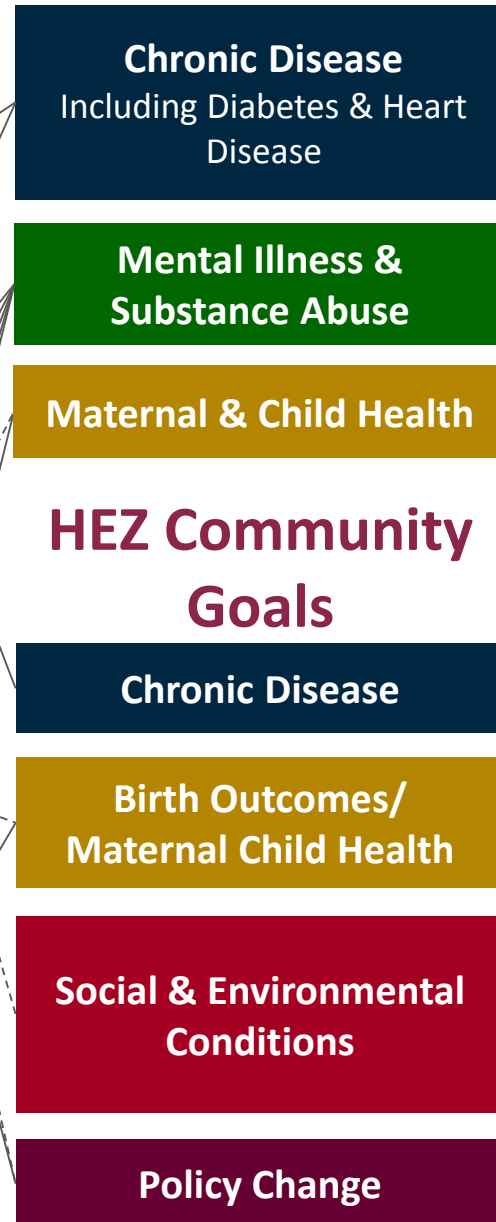


Developing Infrastructure for Quality Care

SIM Health Focus Area Alignment



Statewide CHNA Priorities (HARI)



Adapted from HARI CHNA Research Overview slide deck, 2016

What are SIM's health focus areas?

A report describing the **physical** and **behavioral** health of Rhode Islanders using **8 focus areas**:

SIM Health Focus Areas

Obesity

Tobacco Use

Chronic Disease
(i.e.,
Diabetes,
Heart
Disease, &
Stroke)

Maternal &
Child Health

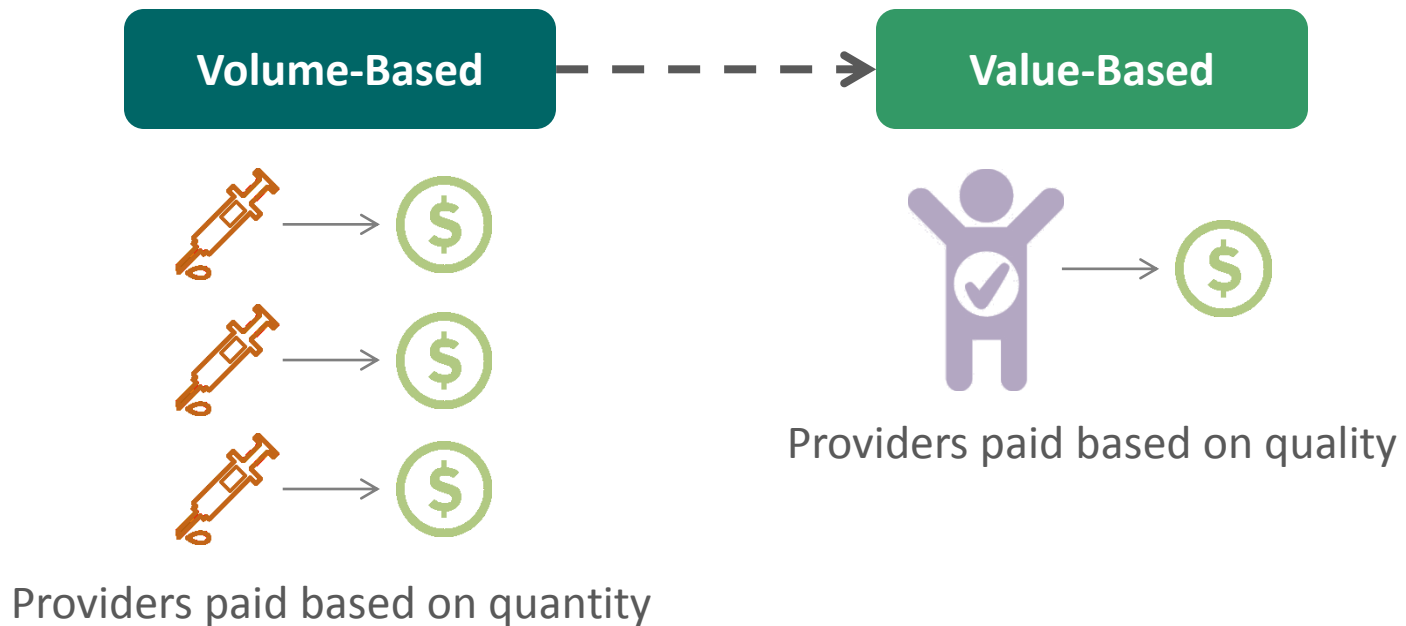
Depression

Children
with Social
& Emotional
Disturbance

Serious
Mental
Illness (e.g.
Schizo-
phrenia)

Opioid Use
Disorders

Linking Payment to Outcomes

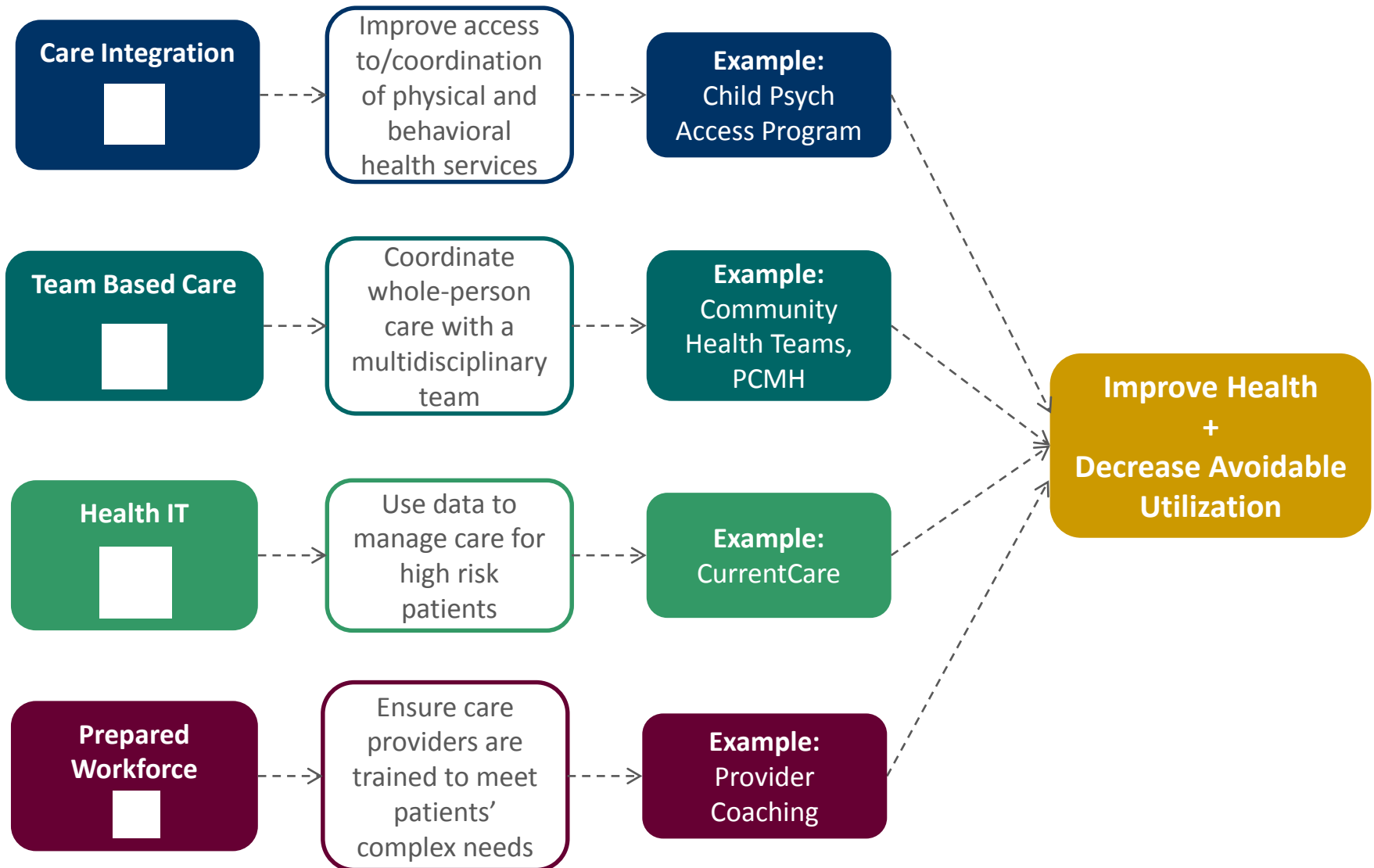


Examples of Activities in Rhode Island:

- Office of the Health Insurance Commissioner (OHIC) and Medicaid are working together to implement aligned value-based payment strategies
- OHIC's Affordability Standards
- Governor Raimondo's Reinventing Medicaid Workgroup

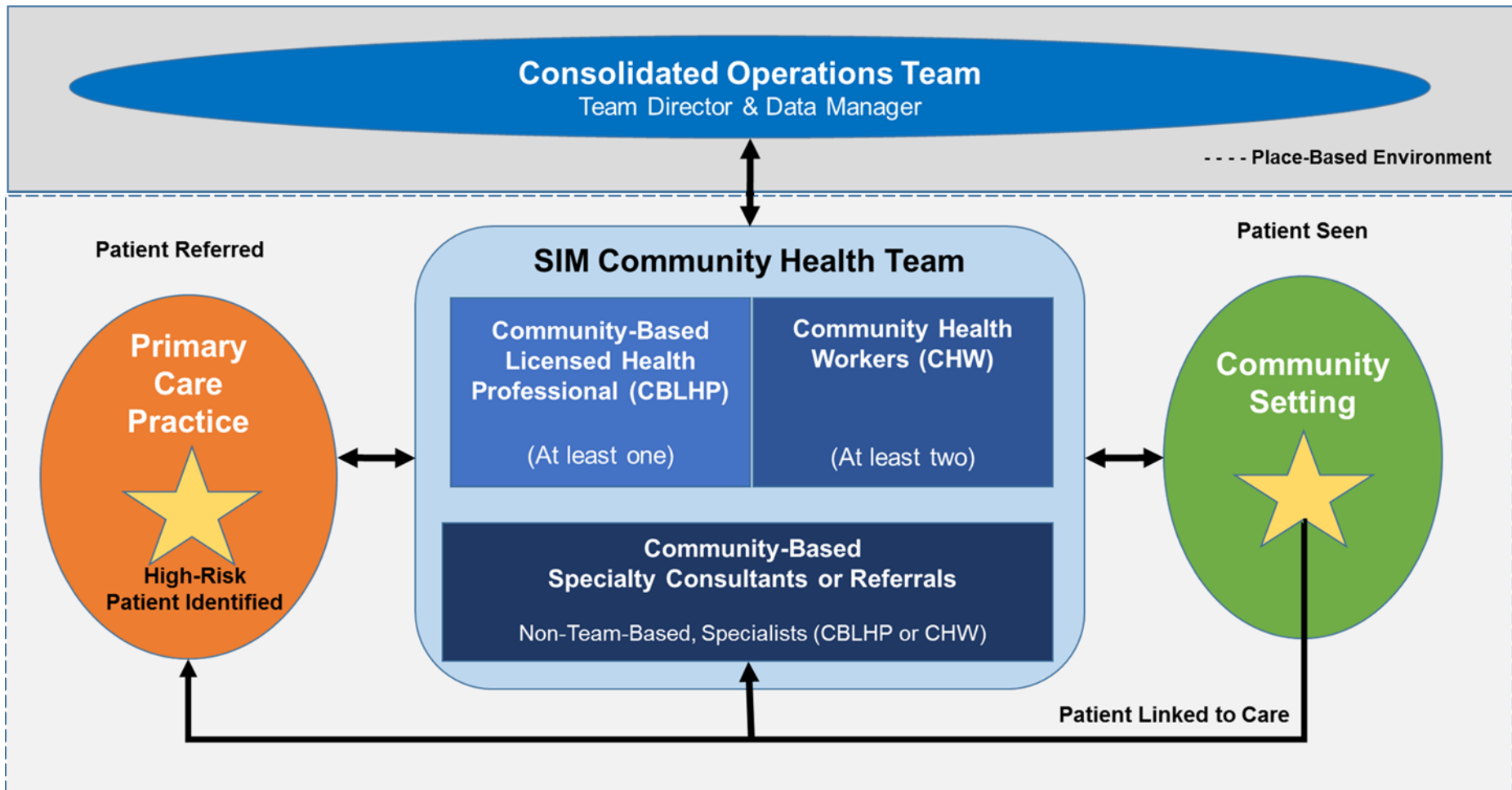
What is Healthcare Transformation?

Transforming the way care is delivered



SIM Operating Model for CHTs

Rhode Island Operating Environment for SIM Community Health Teams



Extending Health Services with CHTs

Caring for Health

Promoting Wellness

H
E
A
L
T
H
C
A
R
E

Primary Care Practices

Hospitals

Community Mental Health Centers

Community Health Teams (CHTs)

CHTs start in the healthcare setting and extend *into the community setting*

Health Equity Zones (HEZs)

HEZs start in the community setting and extend *into the healthcare setting*

Homes

Schools

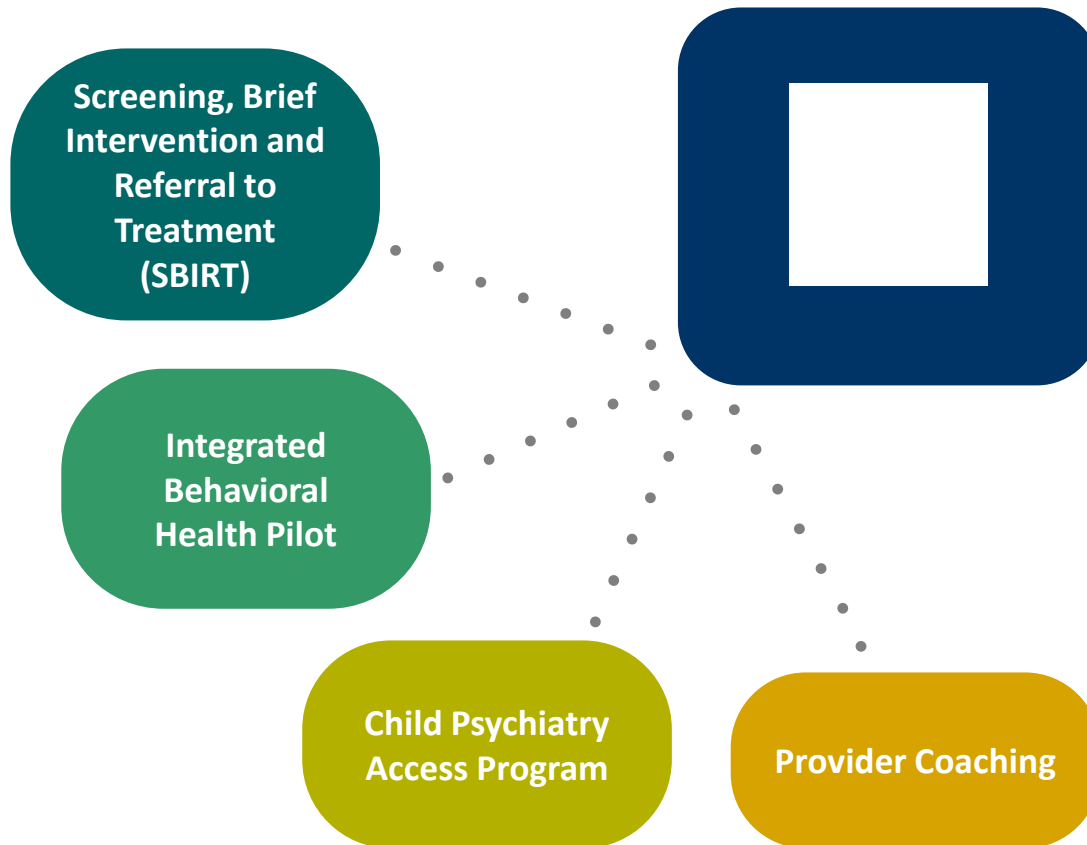
Neighborhoods

C
O
M
M
U
N
I
T
Y

Addressing Social & Environmental Determinants

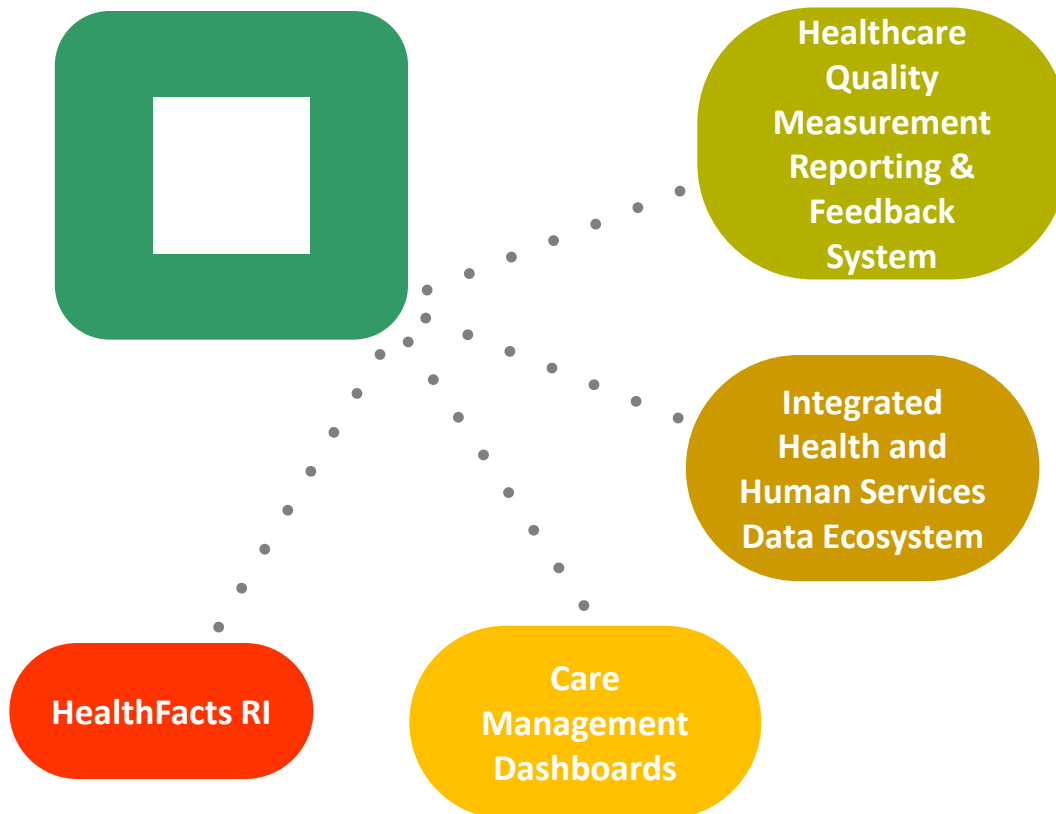
Integrating Physical & Behavioral Health

SIM Investments in Integrated Care



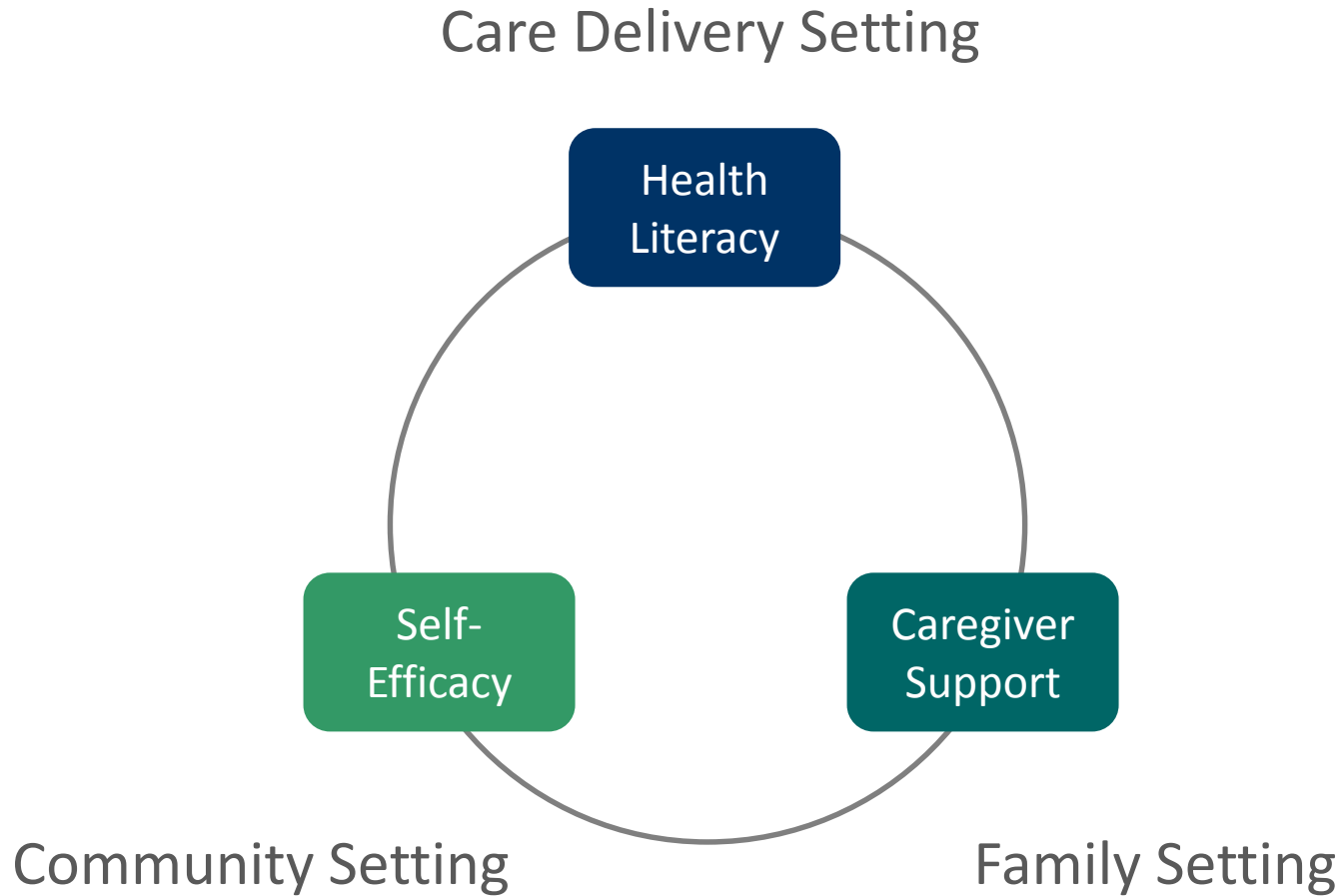
Developing Data Infrastructure to Improve Health Outcomes

SIM investments in Health Information Technology (HIT)

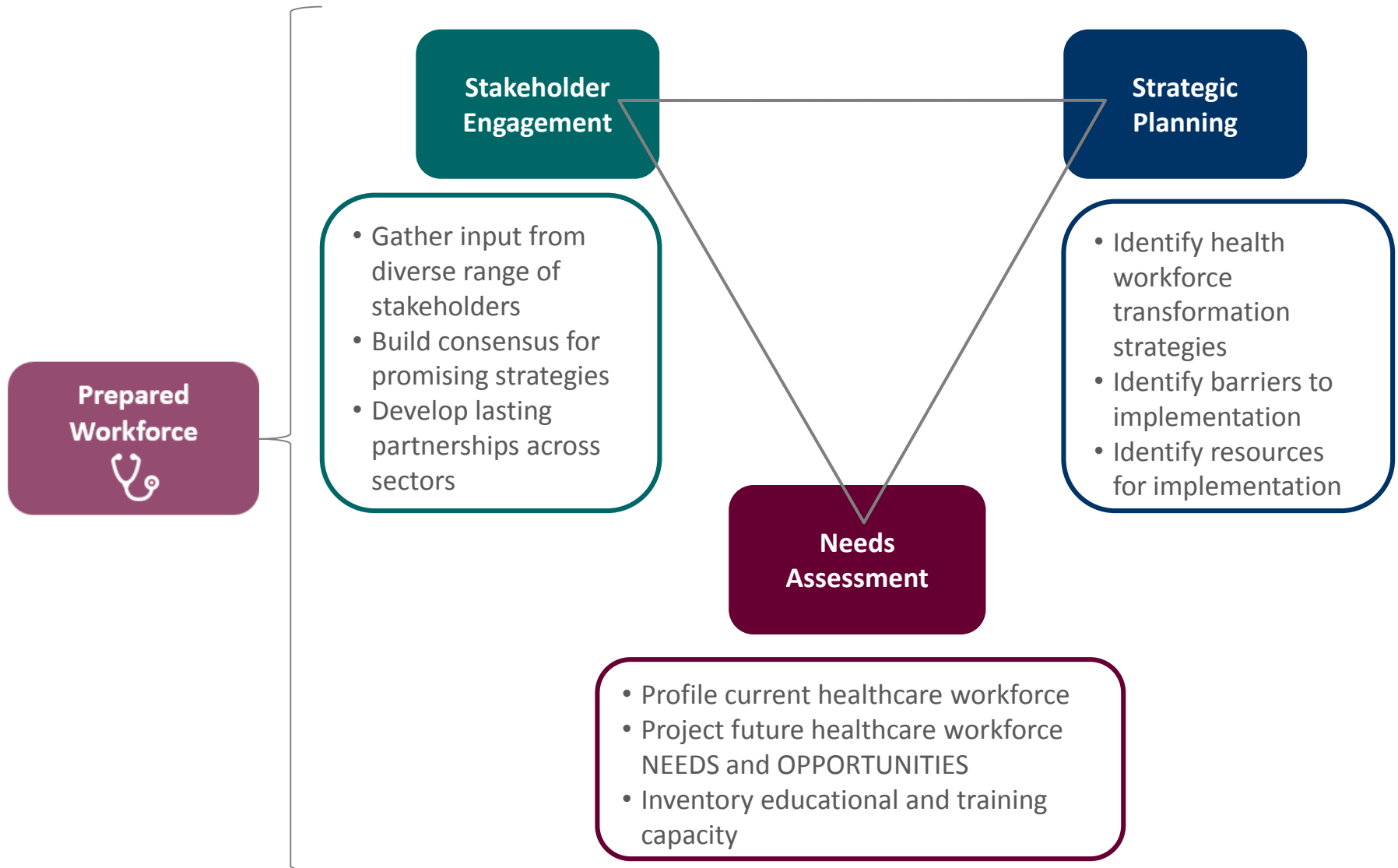


“Collect data once and analyze many times”

SIM Patient Engagement Priorities



Transforming the Healthcare Workforce



The Role of Community Health Workers

Community Health Workers (CHWs)

Community Health Worker Workforce



CHWs:

- Are frontline public health workers
- Are trusted members of the community being served
- Connect health services, social services, and the community
- Help address health disparities



RIDOH created a CHW Certification Credential which will:

- Improve compensation and working conditions
- Increase job stability
- Better integrate CHWs into the health system
- Professionalize a new pipeline of health system resources



CHW Workforce Pathway for Professional Advancement

Certified Community Health Worker



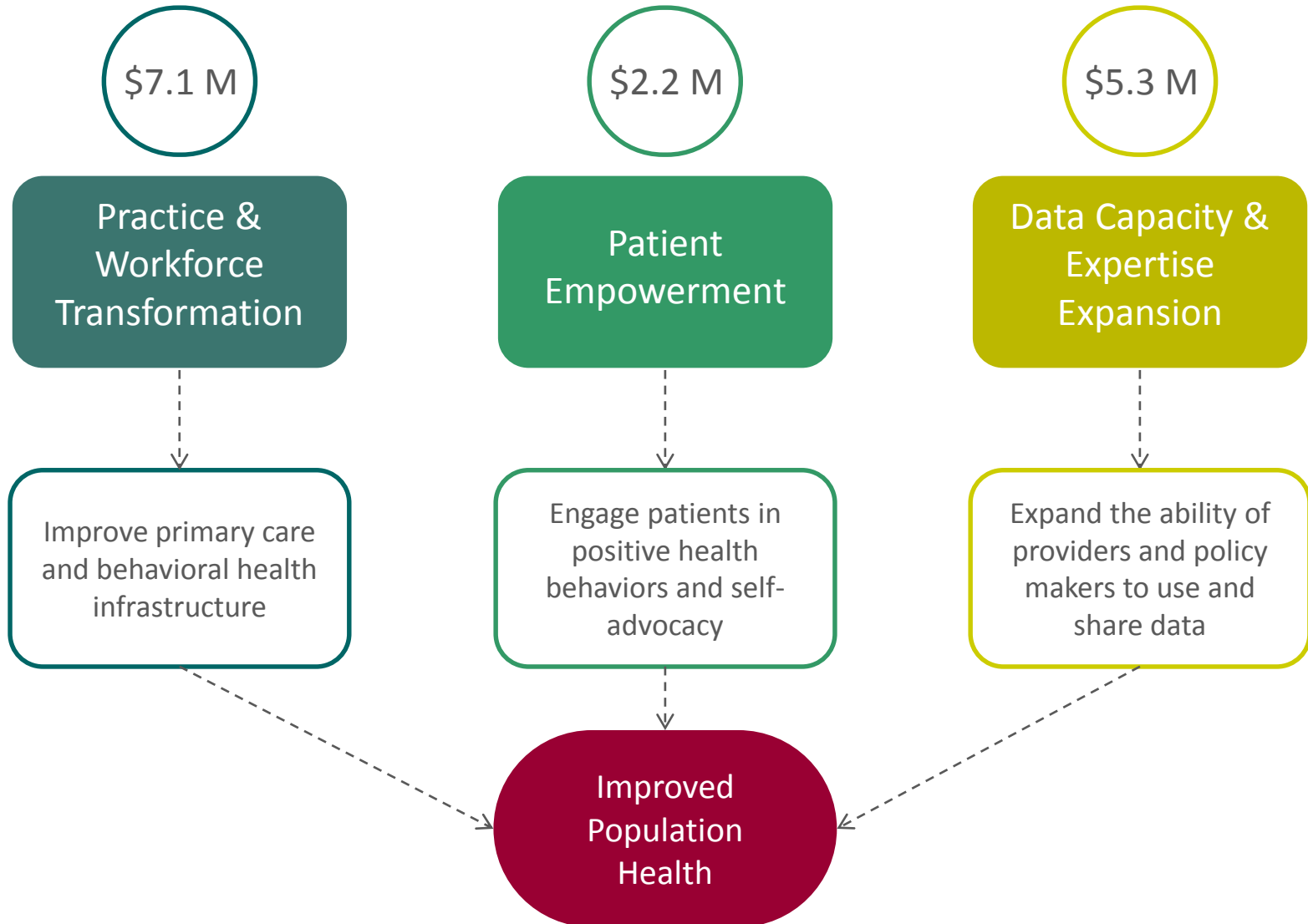
Generalist Community Health Worker



Specialty Community Health Worker

SIM Investments

SIM funds are supporting 3 categories of activities



SIM Transformation Wheel

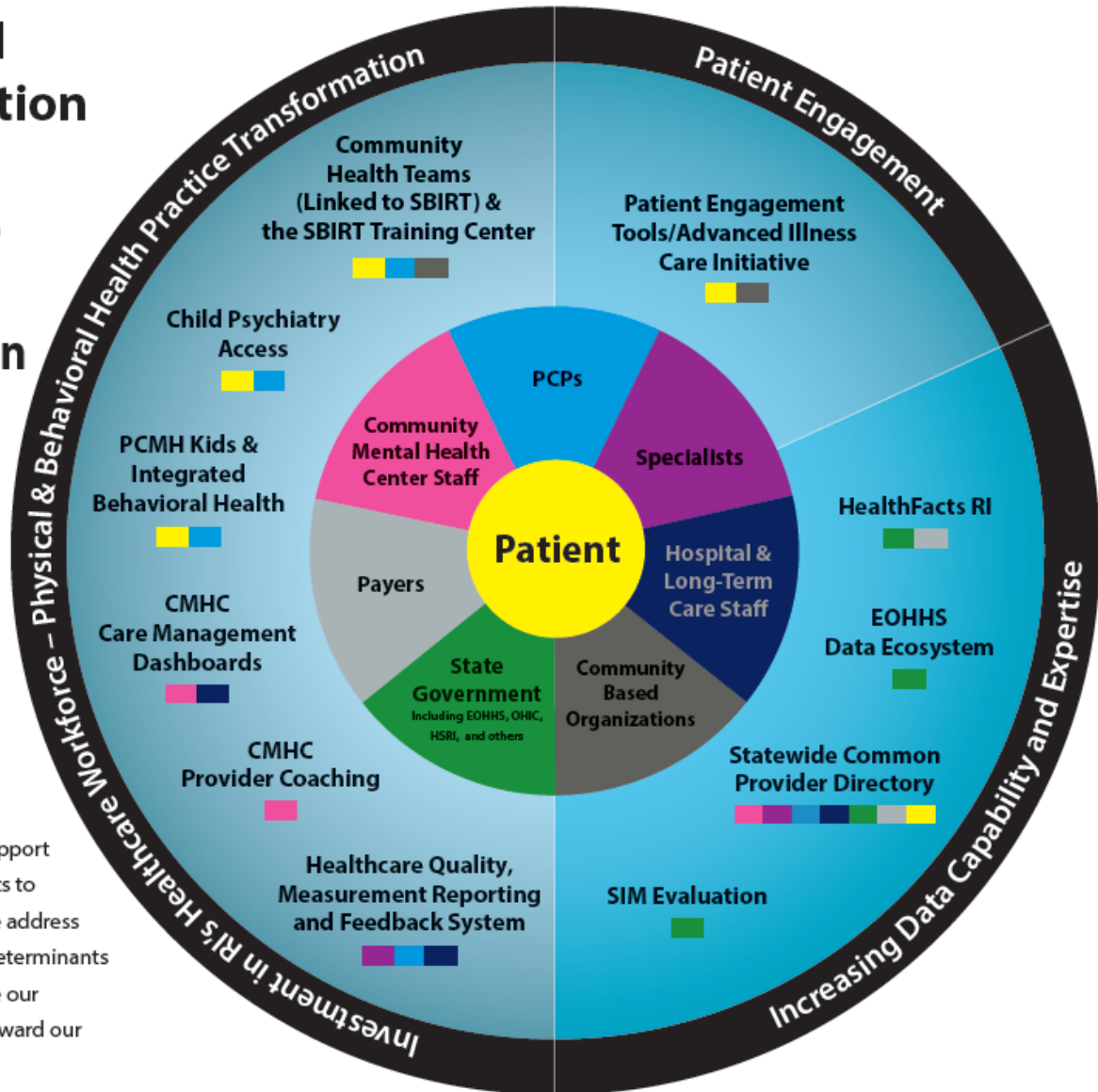
Rhode Island State Innovation Model (SIM): A Healthcare System Transformation Initiative

as of Jan 11, 2017

RI SIM THEORY OF CHANGE-

Rhode Island's payment system is changing to focus more on value and less on volume.

IF SIM makes investments to support providers and empower patients to adapt to these changes, and we address the social and environmental determinants of health, THEN we will improve our Population Health and move toward our vision of the Triple Aim.



Get Involved

1 Help spread the word:

Host a SIM presentation or listening session

2 Stay informed:

Join our mailing list to receive public meeting notices

3 Be part of the conversation:

Attend SIM public meetings

4 Get involved in the work:

Be part of the future IPH Collaborations

Contact SIM

James Rajotte, MS

James.Rajotte@health.ri.gov

SIM Website:

<http://www.eohhs.ri.gov/Initiatives/StateInnovationModel.aspx>