



RIDOH Academic Institute

December 2019

**Laurie Leonard, MS
Director**

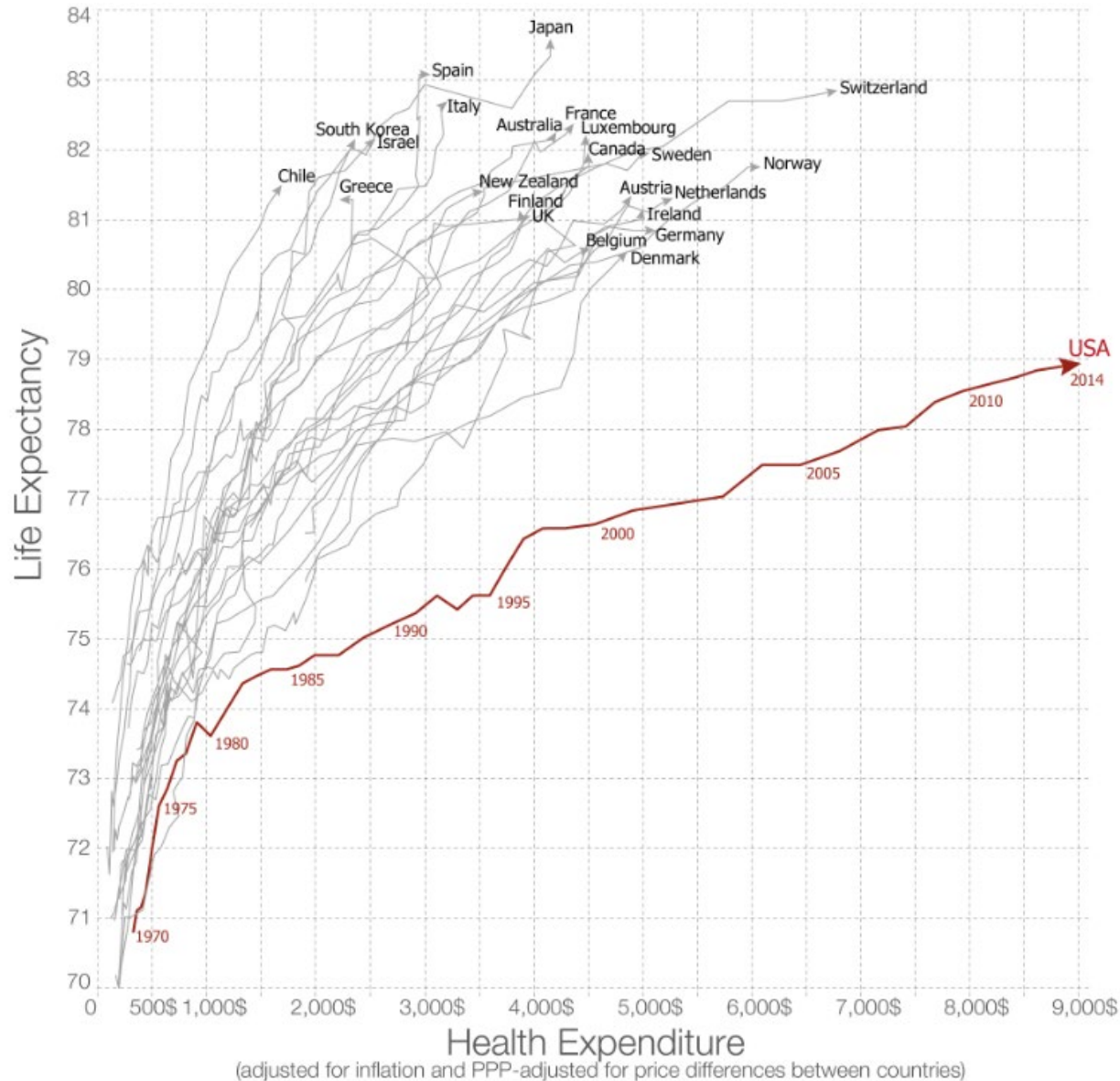
Topics for Today:



- ❖ **Rhode Island Department of Health (RIDOH)**
 - Background
 - RI Statewide Population Health Plan
- RIDOH Academic Institute
 - Mission & Vision
 - Public Health Education & Research
 - Workforce & Career Development
 - Research Integrity & Accreditation



Higher spending doesn't lead to better health

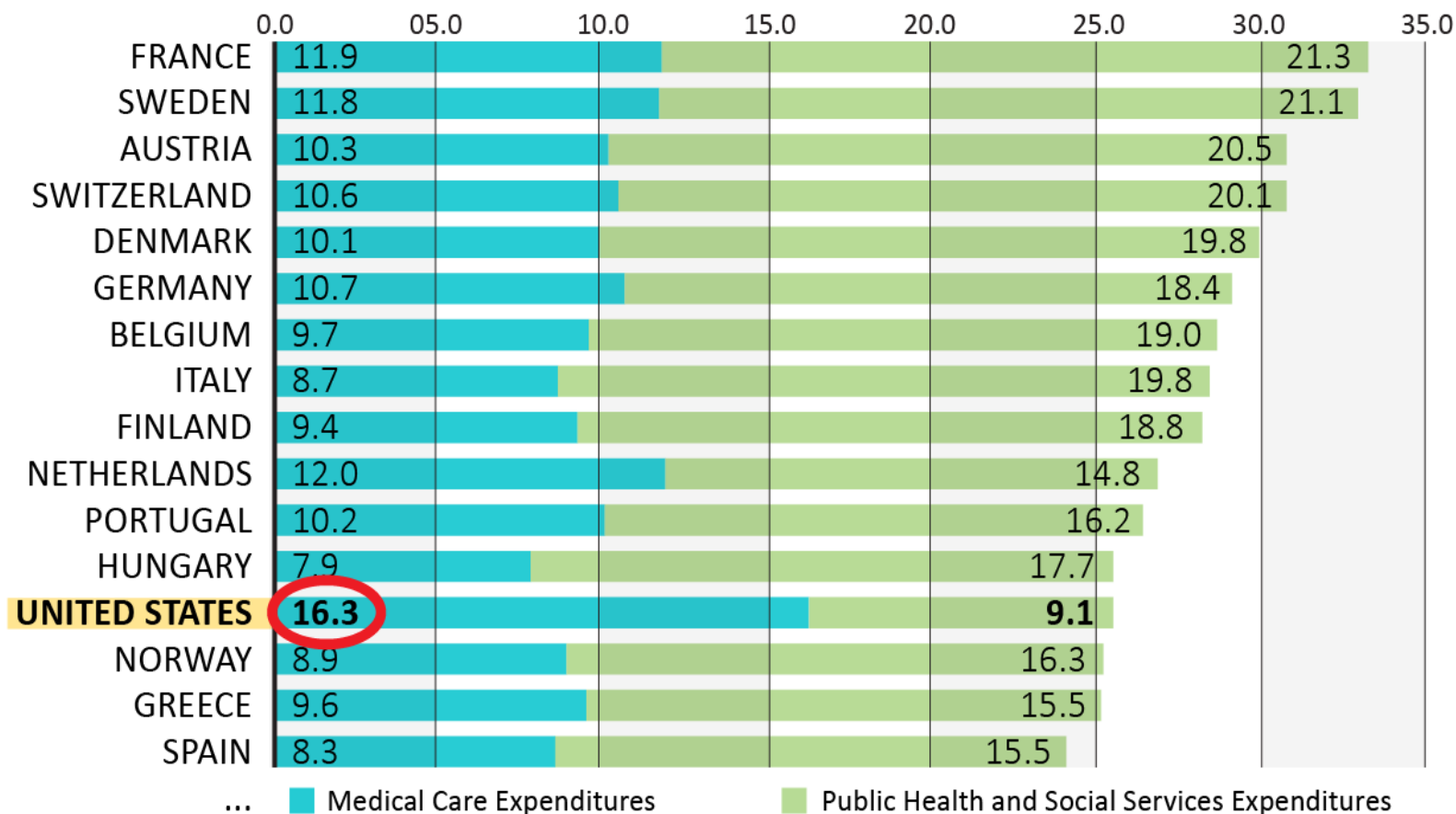


We spend a lot more on healthcare, but our life expectancy is worse.

We don't invest enough in social services

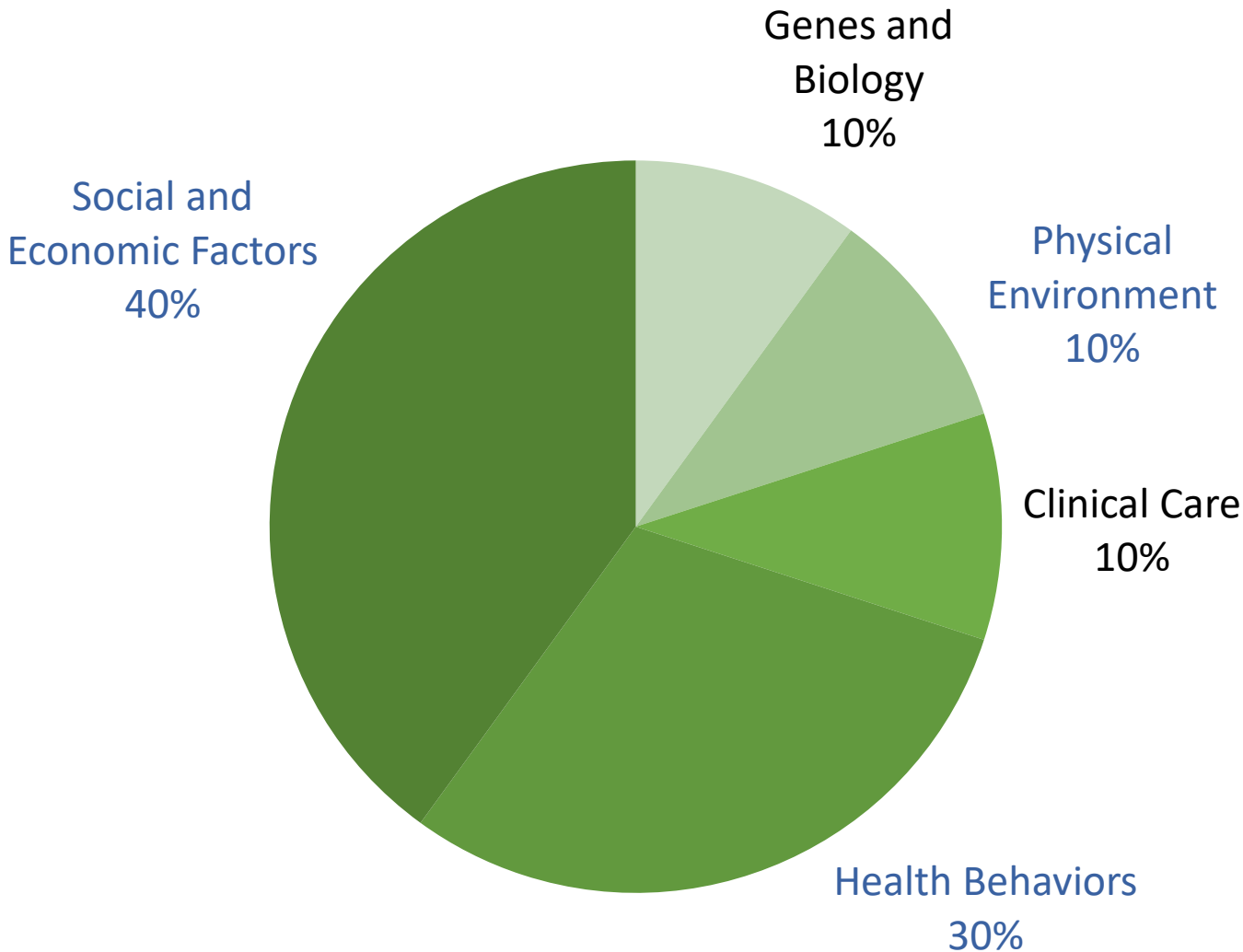


Expenditures as a % of GDP



For every \$1 spent on healthcare, most countries spend \$2 on public health and social services. The US only spends 55 cents.

Health Starts in our Communities



80% of health happens in the community.

RIDOH OVERARCHING GOAL

Positively Demonstrate for Rhode Islanders
the Purpose and Importance of Public Health

RI Population Health Plan LEADING PRIORITIES

**Address
Socioeconomic
and Environmental
Determinants of Health
in Rhode Island**

**Eliminate
Disparities of Health
in Rhode Island
and Promote
Health Equity**

**Ensure Access
to Quality Health Services
for Rhode Islanders,
Including Our Vulnerable
Populations**

CROSS-CUTTING STRATEGIES

RIDOH Academic Institute: Strengthen the integration of scholarly activities with public health
RIDOH Health Equity Institute: Promote collective action to achieve the full potential of all Rlers



Rhode Island Department of Health
Nationally Accredited, November 2015

RIDOH Academic Institute
Director, Laurie Leonard

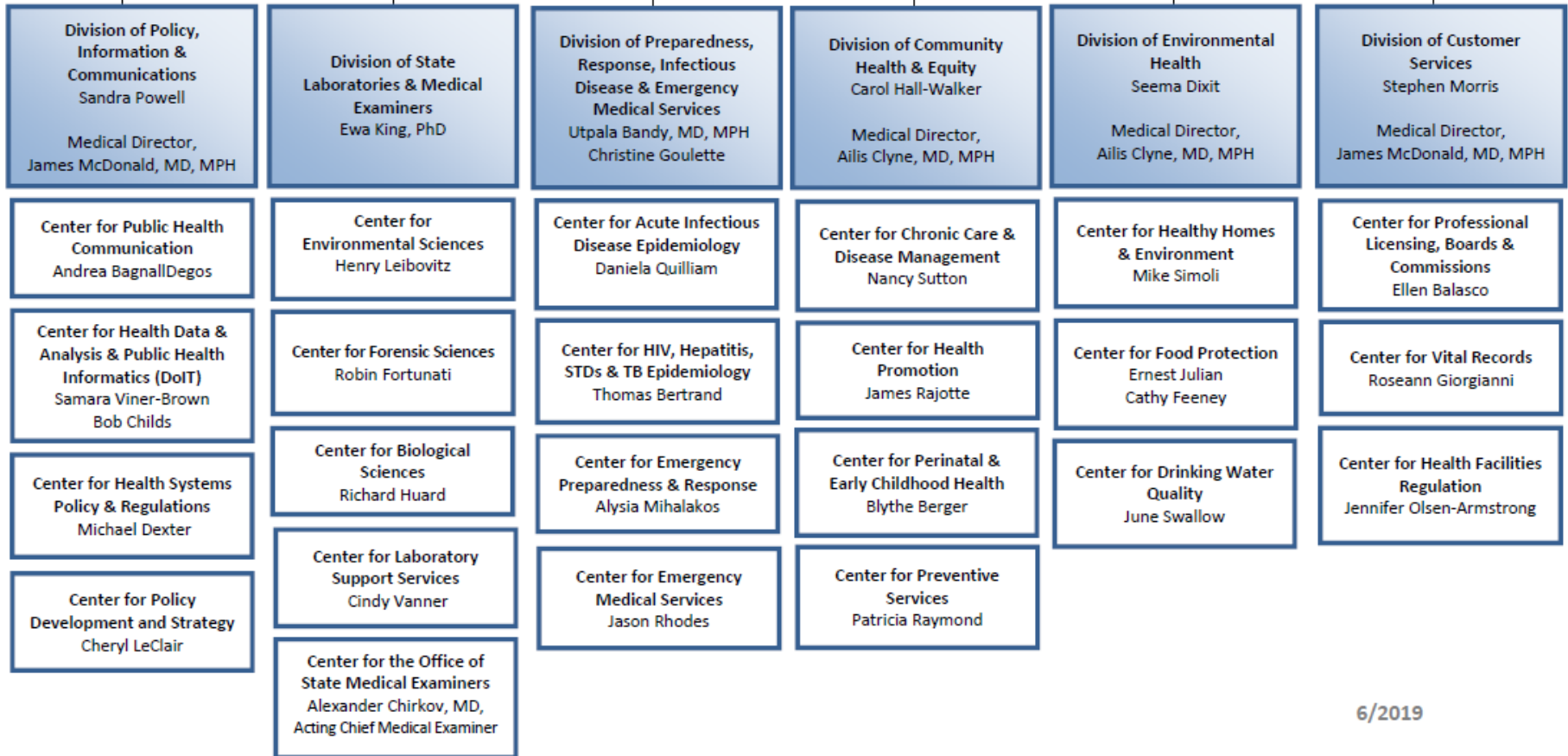
RIDOH Health Equity Institute
Director, Deborah Garneau

Director of Health
Nicole Alexander-Scott, MD, MPH

Deputy Director
Ana Novais

Chief Financial Officer - *Lori Zelano*
Chief Legal Counsel - *Kenny Alston, Esq.*
Public Information Officer - *Joseph Wendelken*
Legislative Liaison - *Neil Hytinen*
Chief Administrative Officer - *Steven Boudreau*

Executive Assistants - *Rita Menard & Lori Dionne*



THREE LEADING PRIORITIES

Address the Social and Environmental Determinants of Health in Rhode Island

Eliminate the Disparities of Health in Rhode Island and Promote Health Equity

Ensure Access to Quality Health Services for Rhode Islanders, Including Our Vulnerable Populations

FIVE STRATEGIES

1. Promote healthy living for all through all stages of life

2. Ensure access to safe food, water, and healthy environments in all communities

3. Promote a comprehensive health system that a person can navigate, access, and afford

4. Prevent, investigate, control, and eliminate health hazards and emergent threats

5. Analyze and communicate data to improve the public's health

23 POPULATION HEALTH GOALS

- 1 Reduce obesity in children, teens, and adults
- 2 Reduce chronic illnesses, such as diabetes, heart disease, asthma, and cancer
- 3 Promote the health of mothers and their children
- 4 Promote senior health to support independent living
- 5 Promote behavioral health and wellness among all Rhode Islanders*
- 6 Support Rhode Islanders in ongoing recovery and rehabilitation for all aspects of health*
- 7 Increase access to safe, affordable, healthy food
- 8 Increase compliance with health standards in recreational and drinking water supplies
- 9 Reduce environmental toxic substances, such as tobacco and lead
- 10 Improve the availability of affordable, healthy housing and safe living conditions*
- 11 Improve access to care including physical health, oral health, and behavioral health systems
- 12 Improve healthcare licensing and complaints investigations
- 13 Expand models of care delivery and healthcare payment focused on improved outcomes*
- 14 Build a well-trained, culturally-competent, and diverse health system workforce to meet Rhode Island's needs*
- 15 Increase patients' and caregivers' engagement within care systems*
- 16 Reduce communicable diseases, such as HIV and Hepatitis C
- 17 Reduce substance use disorders
- 18 Improve emergency response and prevention in communities
- 19 Minimize exposure to traumatic experiences, such as bullying, violence, and neglect*
- 20 Encourage Health Information Technology adoption among RI healthcare providers as a means for data collection and quality improvement
- 21 Enhance and develop public health data systems to support public health surveillance and action
- 22 Develop and implement standards for data collection to improve data reliability and usability
- 23 Improve health literacy among Rhode Island residents*

*These goals have been proposed through the State Innovation Model and are under review.

Topics for Today



- RIDOH
 - Background
 - RI Statewide Population Health Plan
- ❖ **RIDOH Academic Institute**
 - Mission & Vision
 - Public Health Education & Research
 - Workforce & Career Development
 - Research Integrity & Accreditation



RIDOH Academic Institute Vision and Mission

Vision:

Achieve excellence in public health policy & practice through academic collaborations & a multidisciplinary approach to public health in Rhode Island.



Mission:

Strengthen the integration of scholarly activities within public health policy & practice by instilling a culture of learning to support RIDOH's Leading Priorities.

What is Public Health Department Accreditation?

- A voluntary national accreditation program to improve & protect the public's health by advancing the quality & performance of public health departments
 - Requires measurement of RIDOH performance against nationally recognized, practice-focused, evidence-based standards
 - RIDOH sought national accreditation because of the desire to improve service, value & accountability to stakeholders
- Designated through the Public Health Accreditation Board since 2015

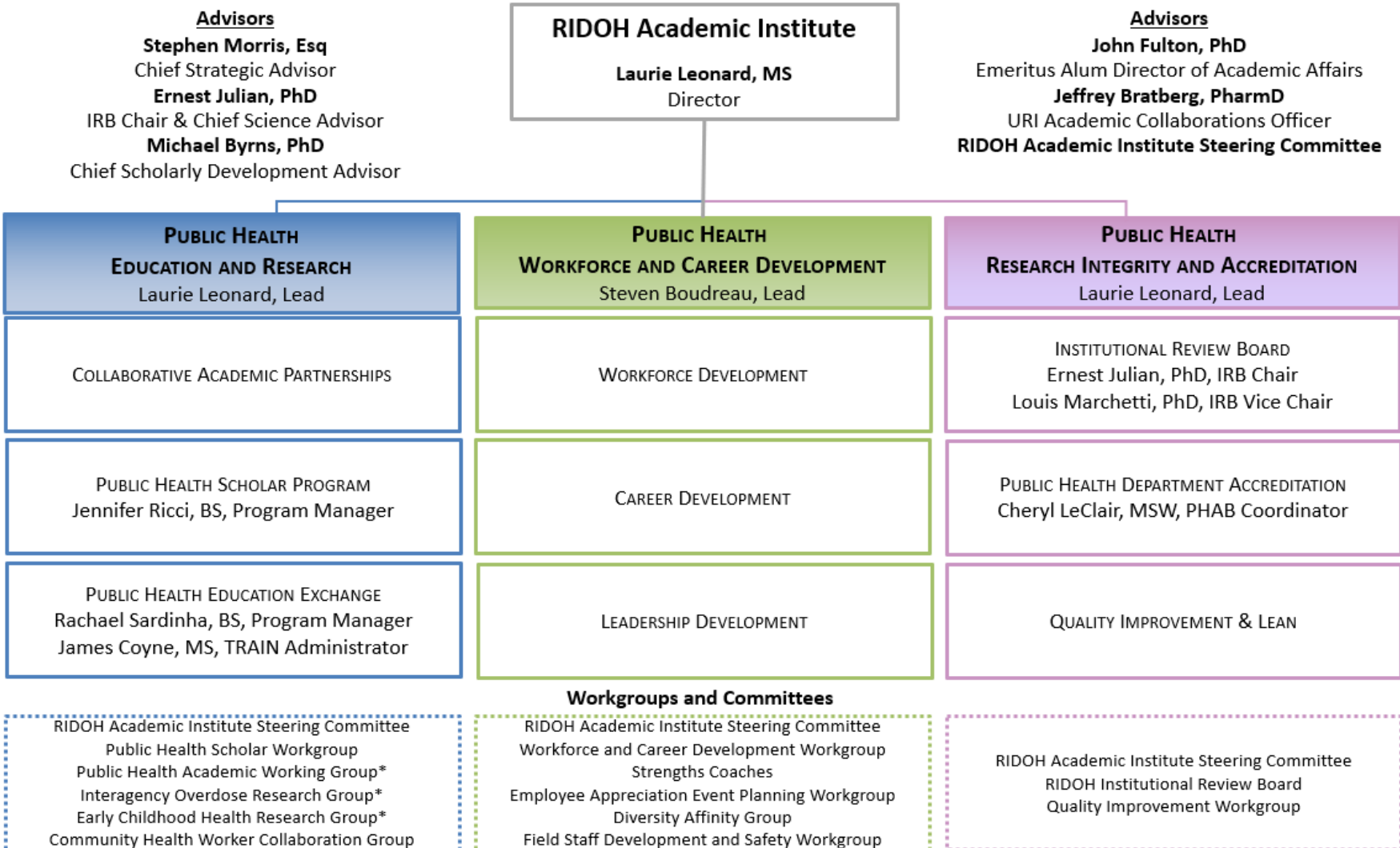


What is an Academic Health Department?

- A teaching health department that establishes formal affiliations between academic institutions & a public health organization
- Designed to enhance public health education, research, & service through facilitated collaboration between academic institutions & public health departments
- Designated through the Public Health Foundation, Council on Linkages Between Public Health & Academia since 2015



RIDOH Academic Institute Working Organizational Chart



Integration of public health practice & academic research

Collaborative Academic Partnerships



Partnerships between RIDOH & academic faculty address research questions based on RIDOH's public health policy & practice

RIDOH Public Health Scholar Program



Collaborative Public Health Research drives learning experiences & research conducted by RIDOH Public Health Scholars

Public Health Education Exchange



Partnerships between RIDOH, academic institutions and medical providers inform an online repository of continuing education opportunities

RIDOH Academic Institute Public Health Education & Research



**Collaborative
Academic Partnerships**

**RIDOH Public Health
Scholar Program**

**Public Health
Education Exchange**

Formalized Partnerships w/ Academic Institutions

| Current | Future |
|--|-------------------------------|
| Brown University School of Public Health | Bryant University |
| Community College of Rhode Island | Rhode Island School of Design |
| Johnson & Wales University | Salve Regina University |
| New England Institute of Technology | |
| Providence College | |
| Rhode Island College | |
| Roger Williams University | |
| University of Rhode Island | |



RIDOH Academic Institute

Public Health Education & Research



Collaborative
Academic Partnerships

RIDOH Public Health
Scholar Program

Public Health
Education Exchange

RIDOH as an Active Research Partner



RIDOH staff and Academic faculty identify shared research interests and funding opportunities to conduct collaborative research that benefits public health

RIDOH Academic Institute

Public Health Education & Research



Collaborative Academic Partnerships

RIDOH Public Health Scholar Program

Public Health Education Exchange

Statewide Research Focus Areas

| Achievement of RI's 3 rd Grade Reading Goal | Opioid Overdose Prevention & Treatment | Community Health Workers | Lyme Prophylaxis Pilot Research |
|--|--|-------------------------------------|---------------------------------|
| RIDOH Academic Institute, RI Department of Health | | | |
| Brown University: Hassenfeld Birth Cohort Study & RI Innovation Policy Lab | Brown University | Rhode Island College | University of Rhode Island |
| | Cranston Police Dept. | Community Health Worker Association | Community Pharmacists |
| Harvard University: Gov. Performance Lab | RI Dept. of Administration | | |
| University of Rhode Island: DataSpark | RI Behavioral Healthcare, Developmental Disabilities & Hospitals | | |
| | RI Dept. of Corrections | | |
| | RI Governor's Office | | |

RIDOH Academic Institute

Public Health Education & Research



Collaborative
Academic Partnerships

RIDOH Public Health
Scholar Program

Public Health
Education Exchange

Public Health Academic Working Group (PHAWG)

- **RIDOH Academic Institute role**
 - Convene PHAWG & Co-Chair with Brown University School of Public Health
- **Purpose**
 - Develop & showcase collaborative public health research between academia & public health
 - Topics focus on addressing public health concerns
- **Membership goal**
 - Representation from RIDOH and from each academic institution

Statewide Research Focus Areas

- **RIDOH Academic Institute role**
 - Facilitator for collaborative state-academic partnerships related to major statewide research
- **Purpose**
 - Facilitation improves statewide collaboration, identification & utilization of increased resources, & enhances outcomes

RIDOH Academic Institute Public Health Education & Research

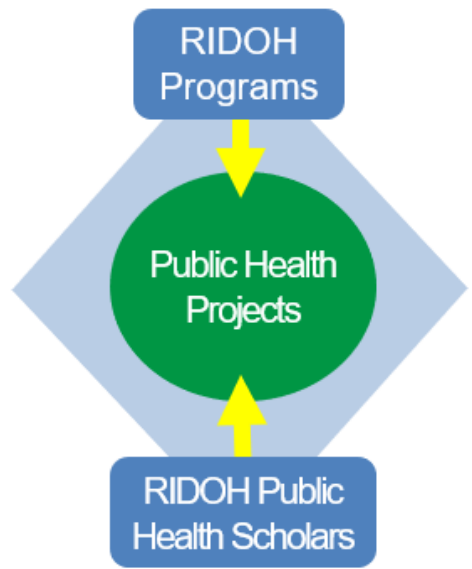


Collaborative
Academic Partnerships

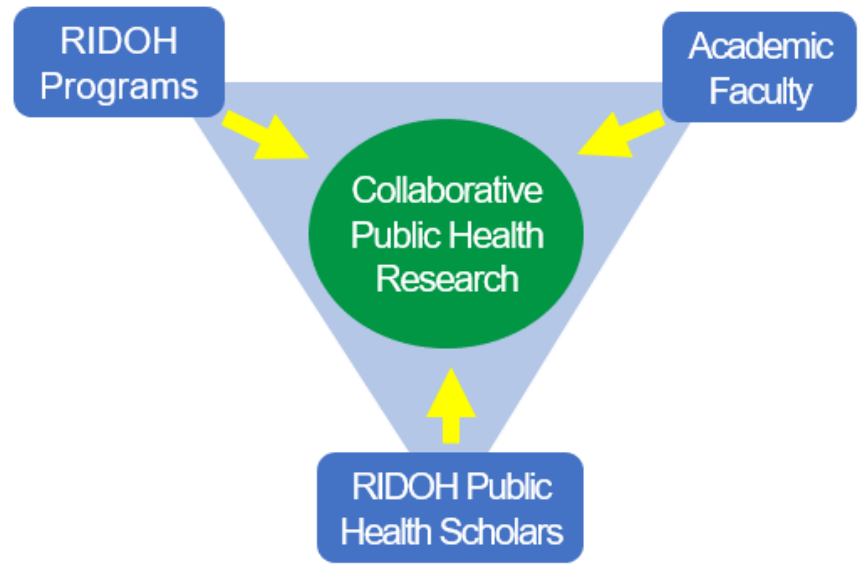
RIDOH Public Health
Scholar Program

Statewide Research
Partnerships

RIDOH Scholar Project Models



RIDOH programs develop projects to address identified public health needs or gaps
RIDOH Scholars assist or lead projects under the guidance of *RIDOH staff*



RIDOH programs and **Academic Faculty** identify shared research interests and opportunities to develop collaborative research projects
RIDOH Scholars assist or lead projects under the guidance of both their *academic faculty* and *RIDOH staff*

RIDOH Academic Institute

Public Health Education & Research



Collaborative Academic Partnerships

RIDOH Public Health Scholar Program

Public Health Education Exchange

| | Observational Scholar | Junior Scholar | Senior Scholar | Advanced Scholar |
|--------------------------------|---------------------------------------|--|---|---|
| Level of Education | High School or Undergraduate students | Undergraduate students | Undergraduate or Graduate students | Doctoral, Clinical or Graduate candidates |
| Engagement with Faculty | No | Maybe | Maybe | Yes |
| Examples of Scholarly Products | None | <ol style="list-style-type: none"> poster presentation at RIDOH or community meeting | <ol style="list-style-type: none"> abstract poster regional/national conference policy/data brief, position statement, etc. | <ol style="list-style-type: none"> manuscript; abstract poster regional/national conference reflection of rotation |
| Minimum Time Commitment | 1-3 RIDOH visits | 20+ hours | 90+ hours | Dependent on project needs or academic institution's rotation requirements |

RIDOH Academic Institute

Public Health Education & Research



Collaborative
Academic Partnerships

RIDOH Public Health
Scholar Program

Public Health
Education Exchange

RIDOH Public Health Scholar Opportunities

Public Health 101 Series

Learn about RIDOH's diverse public health programs and comprehensive work toward achieving RIDOH's leading priorities.

Academic Year frequency: weekly; Summer frequency: bi-weekly

RIDOH Public Health Scholar Poster Symposium

RIDOH Public Health Scholars develop and present posters based on their RIDOH projects. 1st, 2nd and 3rd place are awarded by Director of Health Dr. Nicole Alexander-Scott.

Frequency: August, December and April

RIDOH Public Health Scholar Journal Club

Critically discuss a scientific paper or public health report in an informal, active learning setting.

Frequency: 3-5 per semester

RIDOH Public Health Scholar Poster Development Sessions

Learn about the RIDOH poster template and format, information to include, award criteria, general guidance, and Q&A

Frequency: 3 per semester

RIDOH Public Health Scholar Social Event

Get to know your fellow RIDOH Scholars, their supervisors and academic faculty.

Frequency: once per semester

RIDOH Academic Institute

Public Health Education & Research



Collaborative
Academic Partnerships

RIDOH Public Health
Scholar Program

Public Health
Education Exchange

Expanding the Power of Continuing Education

- **Purpose**
 - Increase accessibility to continuing education (CE) opportunities and career pathways information for current and future health professionals.
 - Engage and support higher education and Accountable Entity (AE) partners, and others by developing a **“clearinghouse” of content-specific trainings for health professional education & continuing learning.**
 - Develop one-stop online presence to direct people to for-credit, not-for-credit or CE that is delivered in the classroom, workplace or online.
 - Describe career and career pathway options across state and link to RI academic institutions’ webpages
 - Utilize Public Health Foundation’s TRAIN learning management system for CE opportunities; include CE developed by academic institutions, RIDOH, other state agencies, community partners, etc.
- **Target populations**
 - Current Health Professionals
 - Health Professions Students
 - Rhode Islanders interested in health professions

Three Leading Initiatives

Workforce Development



Developing the workforce that delivers public health services at RIDOH

Career Development



Engaging and retaining current employees

Leadership Development



Expanding the capacity of individuals to perform in leadership roles

Workforce
Development

Career
Development

Leadership
Development

- **Workforce and Career Development Role**

- Assist the Department in identifying public health workforce trends, gaps, and required knowledge, skills, and abilities.

- **Purpose**

- Ensure a workforce that is trained and skilled in a broad set of public health competencies.



Workforce
Development

Career
Development

Leadership
Development

- **Workforce and Career Development Role**
 - Provide resources in support of career planning activities.
- **Purpose**
 - Expand the capacity of individuals to planning a career.



RIDOH Academic Institute

Workforce & Career Development



Workforce
Development

Career
Development

Leadership
Development

- **Workforce and Career Development Role**

- Provide access to resources and activities that improve the skills, abilities, and confidence of RIDOH leaders.

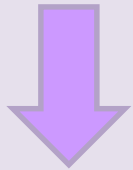
- **Purpose**

- Facilitate execution of the Department's strategic priorities.



Three Leading Initiatives

Institutional Review Board



Ensure the privacy of the individuals is not violated when research involves data about people

RIDOH Accreditation



Measure RIDOH's performance against nationally recognized, practice-focused, evidence-based standards

Quality Improvement



Improve RIDOH efficiencies through use of continuous quality improvement

RIDOH Academic Institute

Research Integrity & Accreditation



Institutional Review
Board

RIDOH Accreditation

Quality Improvement

- **RIDOH Academic Institute role**
 - Convene the RIDOH Institutional Review Board (IRB) to review all proposals for research involving RIDOH data
- **Purpose**
 - Assure protection of the rights, welfare, and wellbeing of human subjects involved in research

Ethics
IRB
Human Subjects
Monitoring
Compliance Justice
Beneficence Respect
Education
Research

RIDOH Academic Institute

Research Integrity & Accreditation



Institutional Review Board

RIDOH Accreditation

Quality Improvement

- **RIDOH Academic Institute role**

- Collaborate with RIDOH division, centers and programs to achieve accreditation objectives through measurement of RIDOH performance against nationally recognized, practice-focused, evidence-based standards

- **Purpose of Public Health Department Accreditation**

- The Public Health Accreditation Board (PHAB) is a voluntary national accreditation program for public health departments
- To improve & protect the public's health by advancing the quality & performance of public health departments



- **RIDOH History**

- RIDOH sought national accreditation to document improved service, value & accountability for stakeholders
- RIDOH has been accredited since 2015 with re-accreditation in 2020

RIDOH Academic Institute

Research Integrity & Accreditation

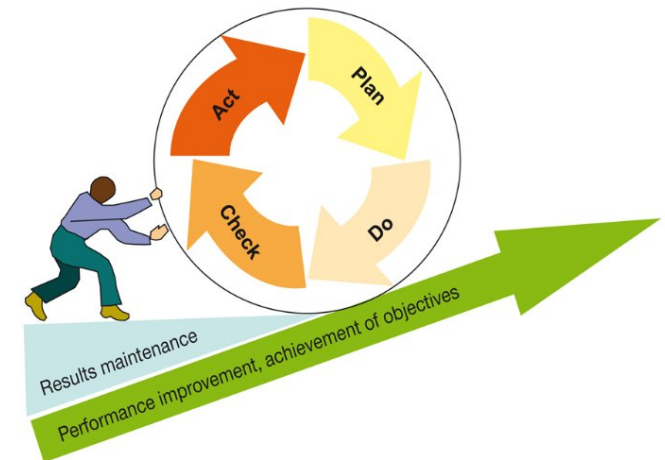


Institutional Review Board

RIDOH Accreditation

Quality Improvement

- **RIDOH Academic Institute role**
 - Support the culture of quality improvement across RIDOH through identification of QI technical assistance for RIDOH programs
- **Purpose**
 - To improve the quality of public health policies, programs, processes or infrastructure, based on performance standards, measurements, and acceptable QI practices in public health settings.





Thank you!

Laurie Leonard, MS

Director, RIDOH Academic Institute

Laurie.Leonard@health.ri.gov

<http://www.health.ri.gov/programs/ridohacademicinstitute/>

www.health.ri.gov/scholars