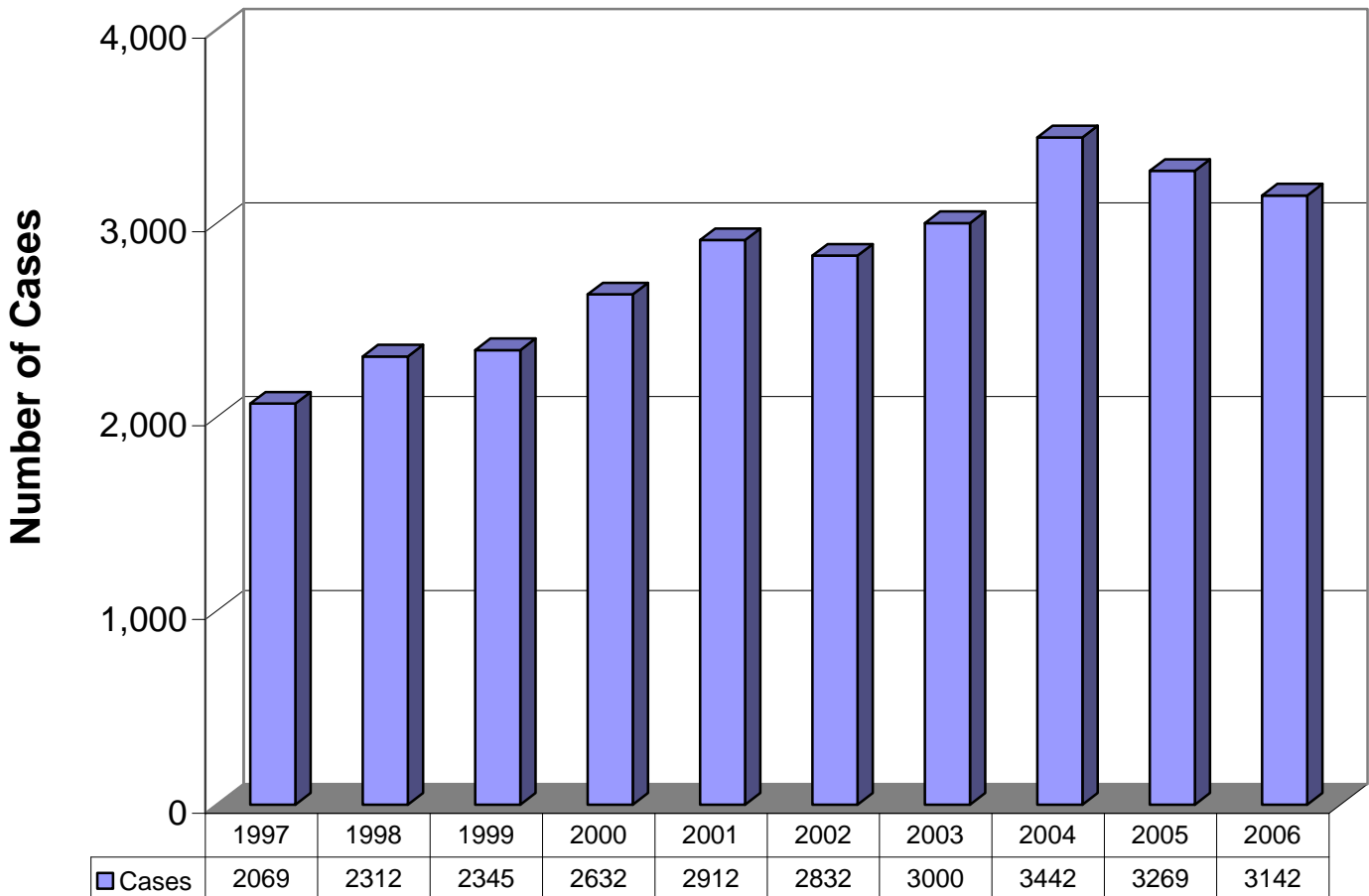


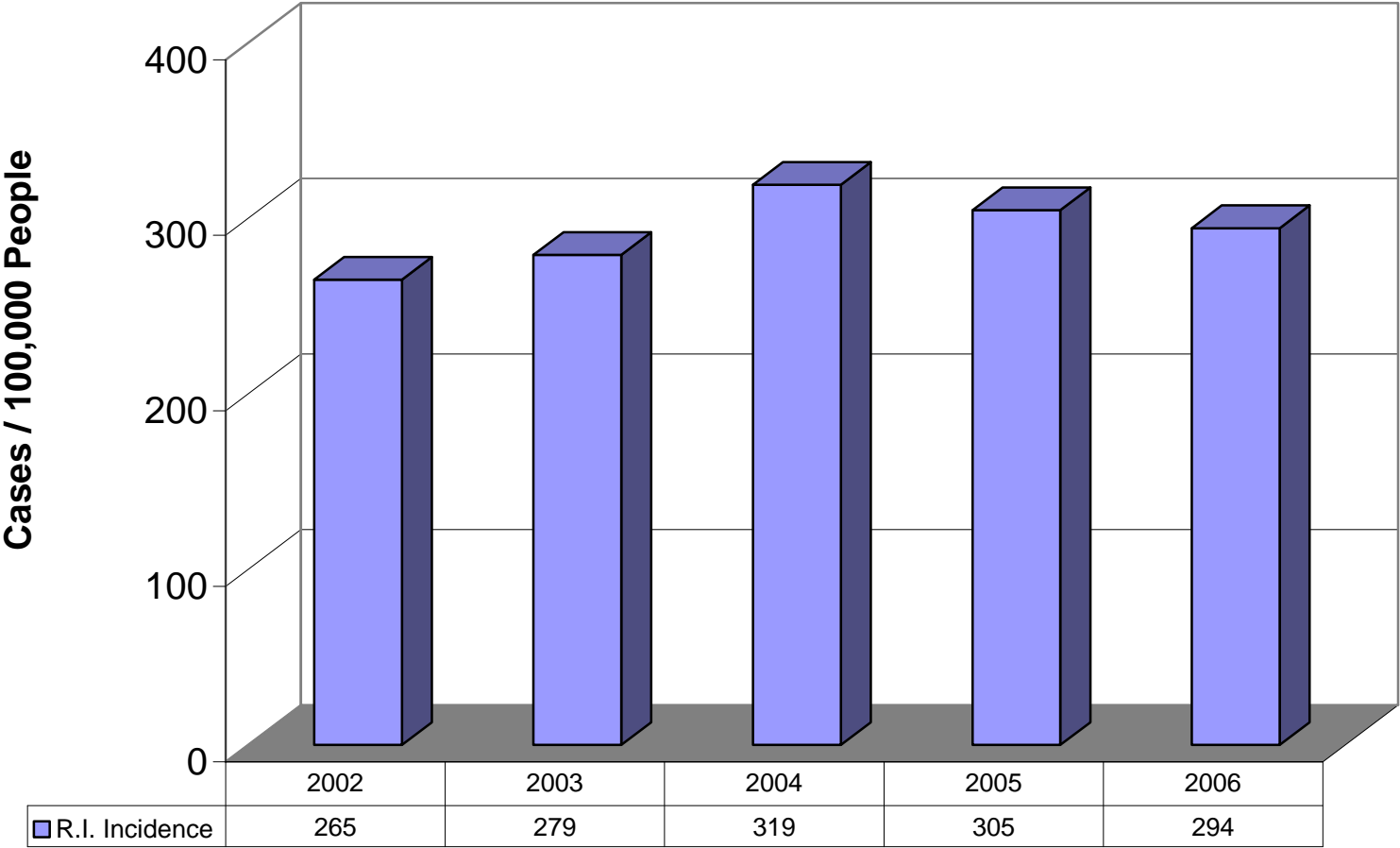
Chlamydia

- 10-Year Incidence of Disease, 1997-2006
- 5-Year Rate of Disease, 2002-2006
- Reported Cases by Age Group, 2006
- Reported Cases by Gender, 2006
- Reported Cases by County, 2006
- 5-Year Rate of Disease by Race/Ethnicity, 2002-2006

## Reported Cases of Chlamydia, Rhode Island, 1997-2006



# Incidence Rate\* of Chlamydia, Rhode Island, 2002-2006



\* Rates are expressed as cases/100,000 population. Rates are based on 2002 through 2006 Rhode Island population estimates as calculated by the U.S. Census Bureau.

### Reported Cases of Chlamydia by Age Group, Rhode Island, 2006

Age Group	Number of Reported Cases	% of Cases	Rate* of Disease per 100,000 People
10-14	26	0.8	37.7
15-19	1,046	33.3	1,282.5
20-24	1,204	38.3	1,532.3
25-29	484	15.4	715.2
30-34	189	6.0	292.4
35-39	97	3.1	128.6
40-44	47	1.5	56.7
45-54	33	1.1	20.6
55-64	6	0.2	5.2
65+	<5	--	--
Unknown	<5	--	--
<b>Total</b>	<b>3,142</b>	<b>100</b>	<b>294.3</b>

\*Denominator for computing rates for Rhode Island was based on the 2006 population estimate obtained from the U.S. Census Bureau.

### Reported Cases of Chlamydia By Gender, Rhode Island, 2006

Gender	Number of Reported Cases	% of Cases	Rate* of Disease per 100,000 People
Male	962	30.6	186.4
Female	2,175	69.2	394.5
Unknown	5	0.2	--
<b>Total</b>	<b>3,142</b>	<b>100</b>	<b>294.3</b>

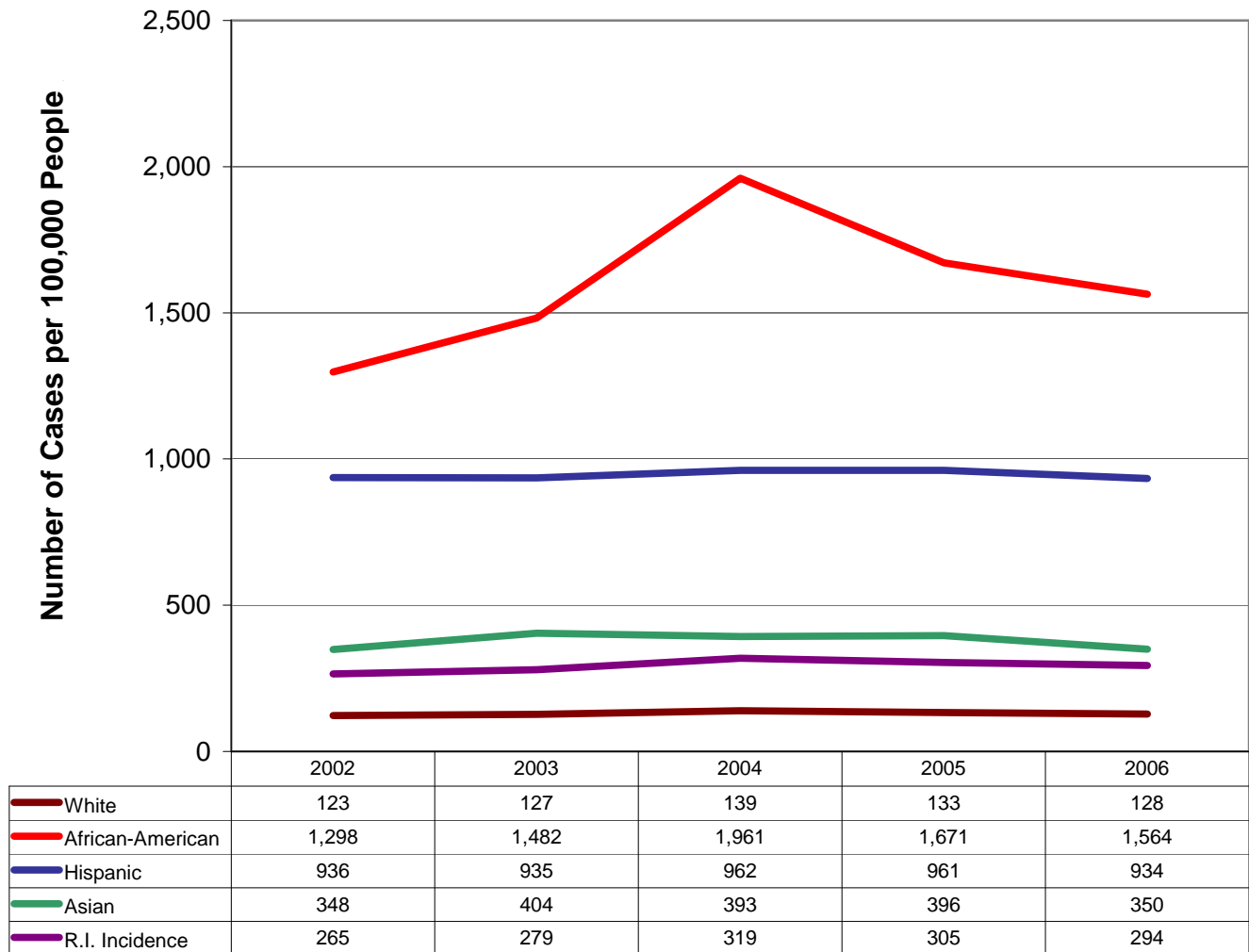
\*Denominator for computing rates for Rhode Island was based on the 2006 population estimates obtained from the U.S. Census Bureau.

### Reported Cases of Chlamydia by County, Rhode Island, 2006

County	Number of Reported Cases (%)	% of Cases	Rate* of Disease per 100,000 People
Bristol	61	1.9	116.7
Kent	205	6.5	120.6
Newport	141	4.5	171.6
Providence	2,573	81.9	404.8
Washington	158	5.0	123.9
Unknown	4	0.1	--
<b>Total</b>	<b>3,142</b>	<b>100</b>	<b>294.3</b>

\*Denominator for computing rates for Rhode Island was based on the 2006 population estimates obtained from the U.S. Census Bureau.

## Chlamydia Rates\*, Rhode Island, 2002-2006



\* Rates are expressed as cases/100,000 people. Rates are based on 2002 through 2006 Rhode Island population estimated as calculated by the U.S. Bureau of the Census. The rates for 2002 through 2006 are estimates due to missing race/ethnicity data.

Questions regarding these data can be directed to the Office of Communicable Diseases at (401) 222-2577.