



# Disparities in Diabetes in Rhode Island

Annie Gjelsvik, PhD

Rhode Island Department of Health

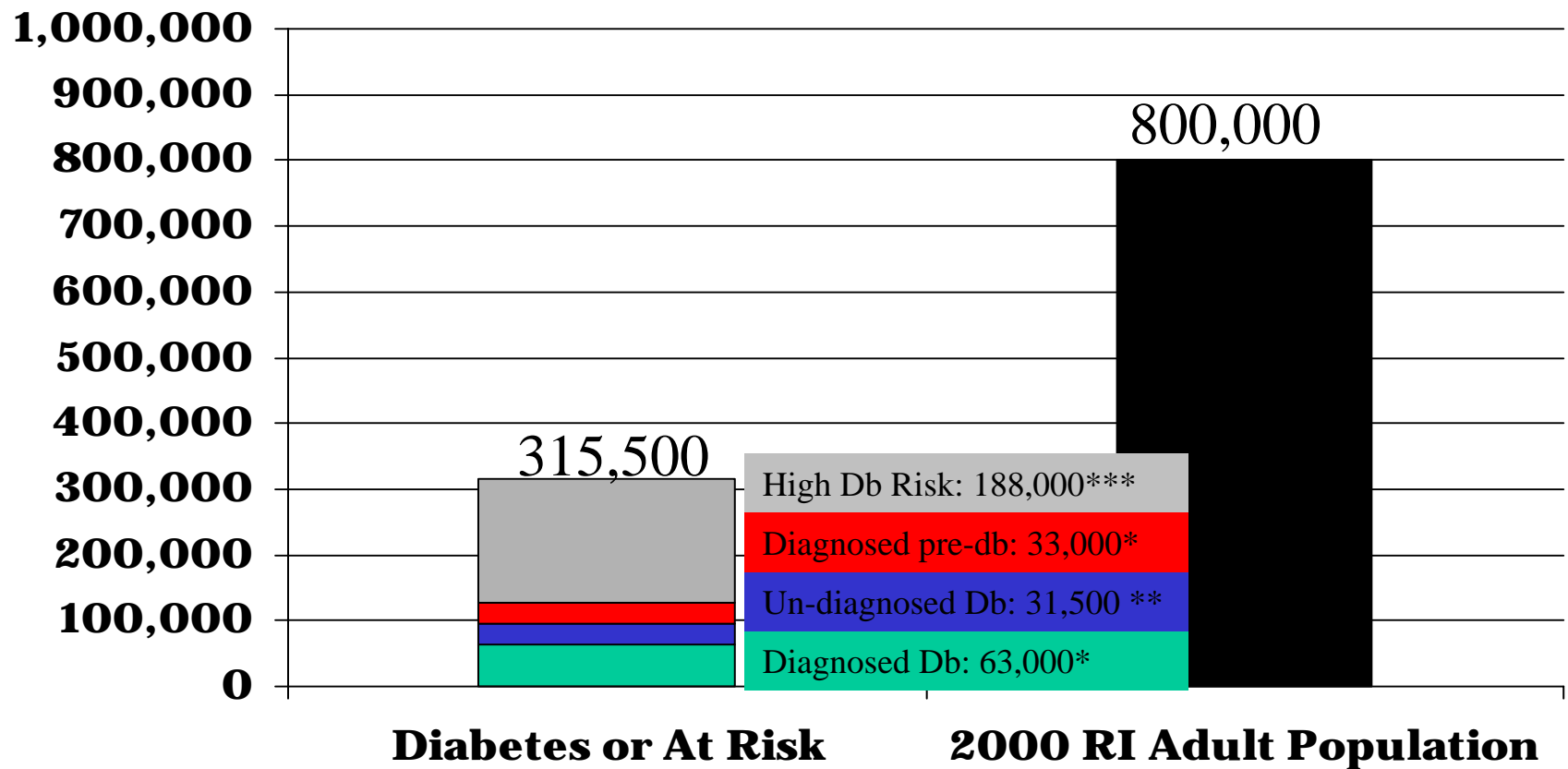
November 2008

# Measurement



- Prevalence of diagnosed diabetes and pre-diabetes among adults
- Rate of serious outcomes
- Prevalence of receipt of clinical preventive services among adults with diabetes

# Estimated # of RI Adults With Diabetes or At Risk for Diabetes, 2007

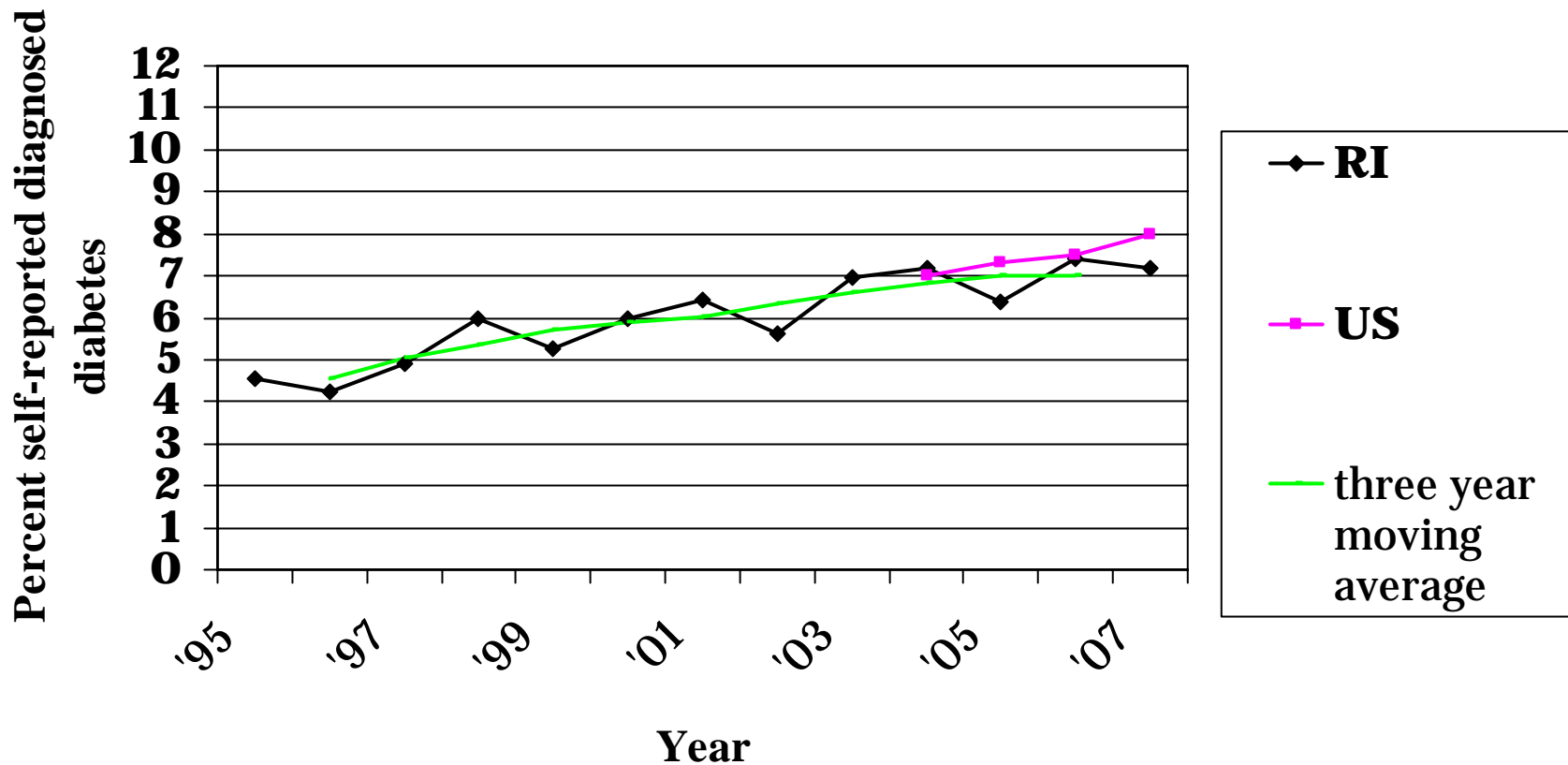


\*2005-2007 RI-BRFSS

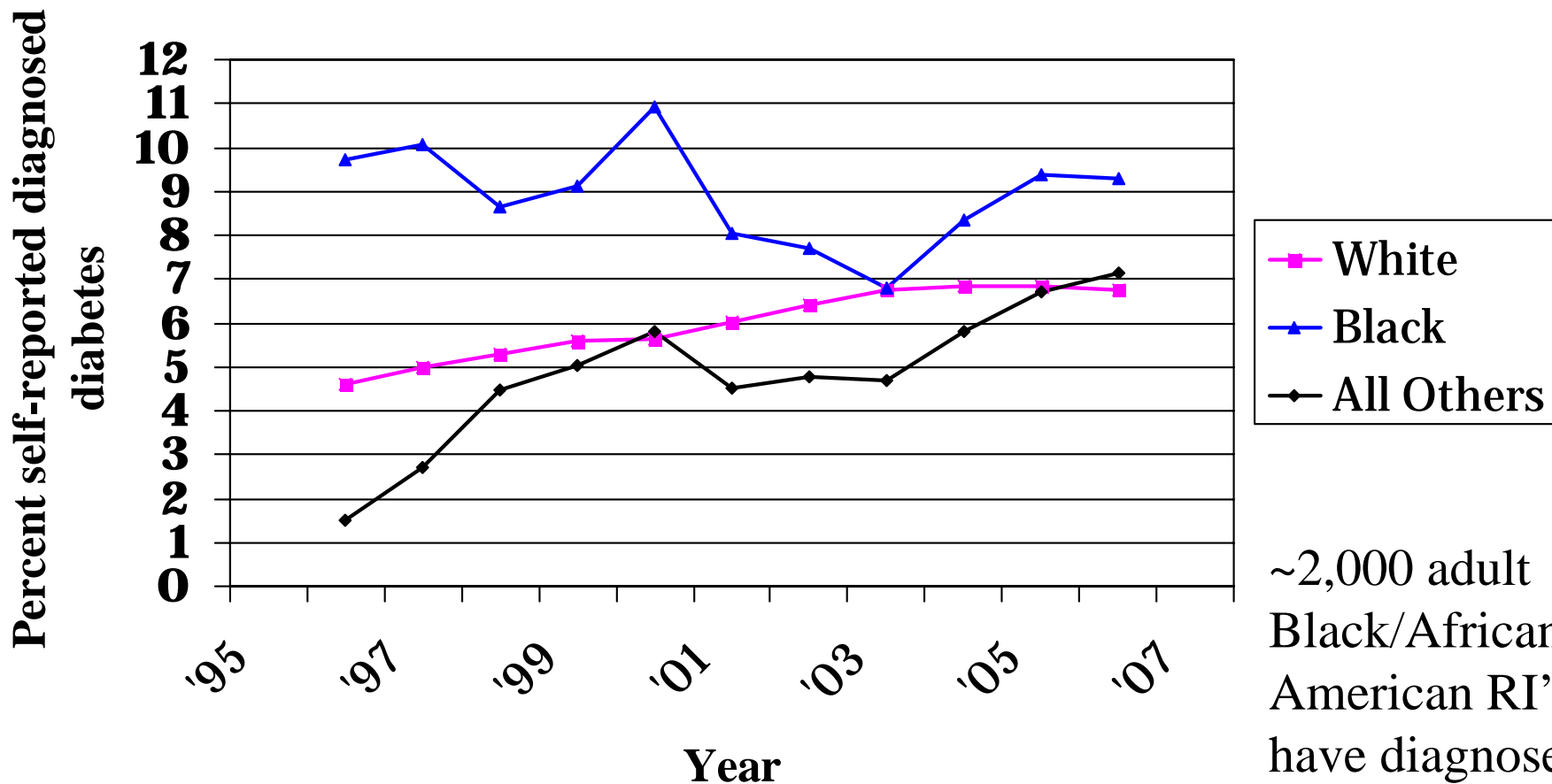
\*\* Estimated from NHANES III data

\*\*\* 2003 RI-BRFSS using previously validated Diabetes Risk Score

# Prevalence of Diabetes among RI Adults 1995-2007

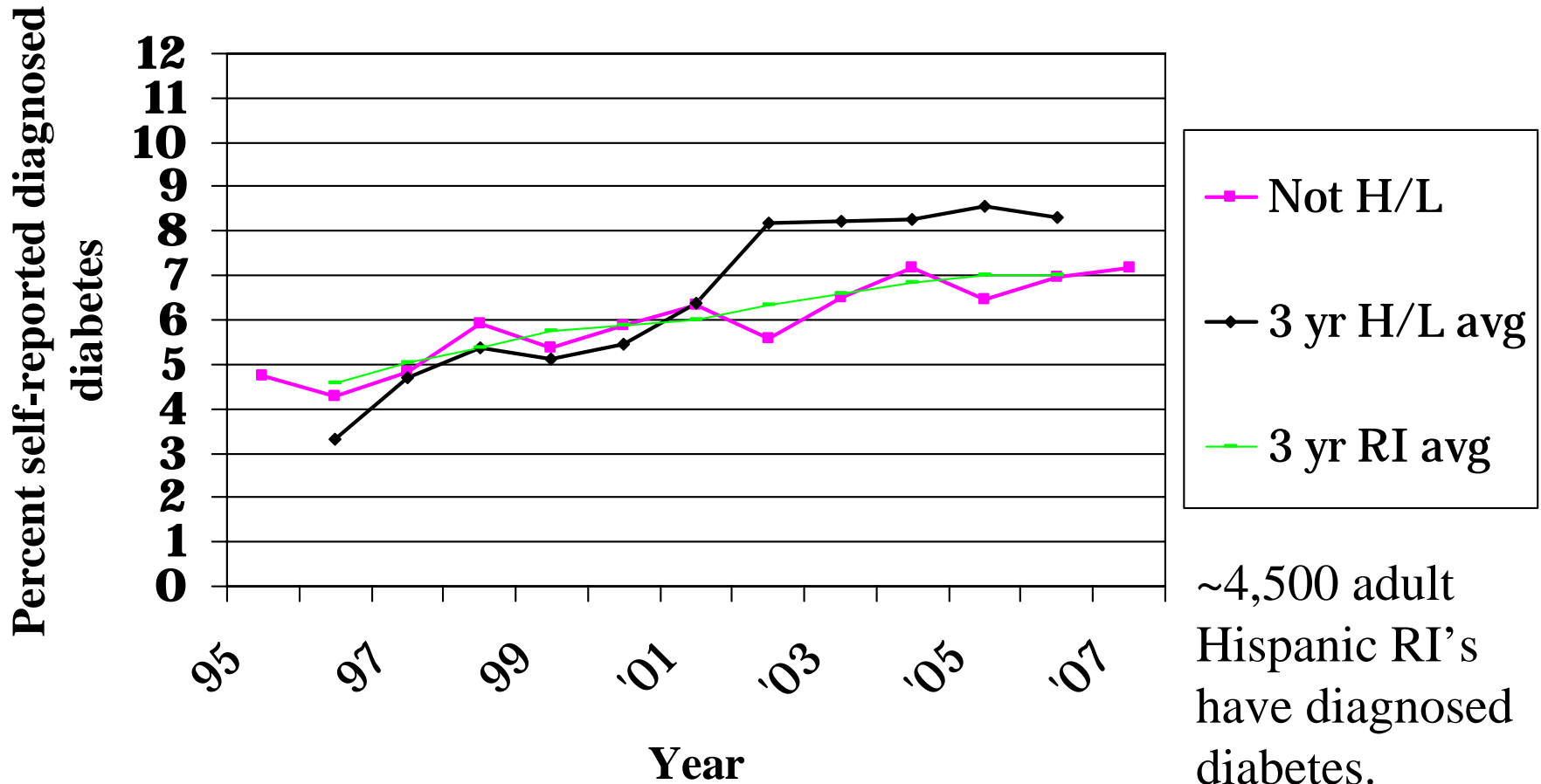


# Trend of Diabetes among RI Adults by Race – 3 year moving averages



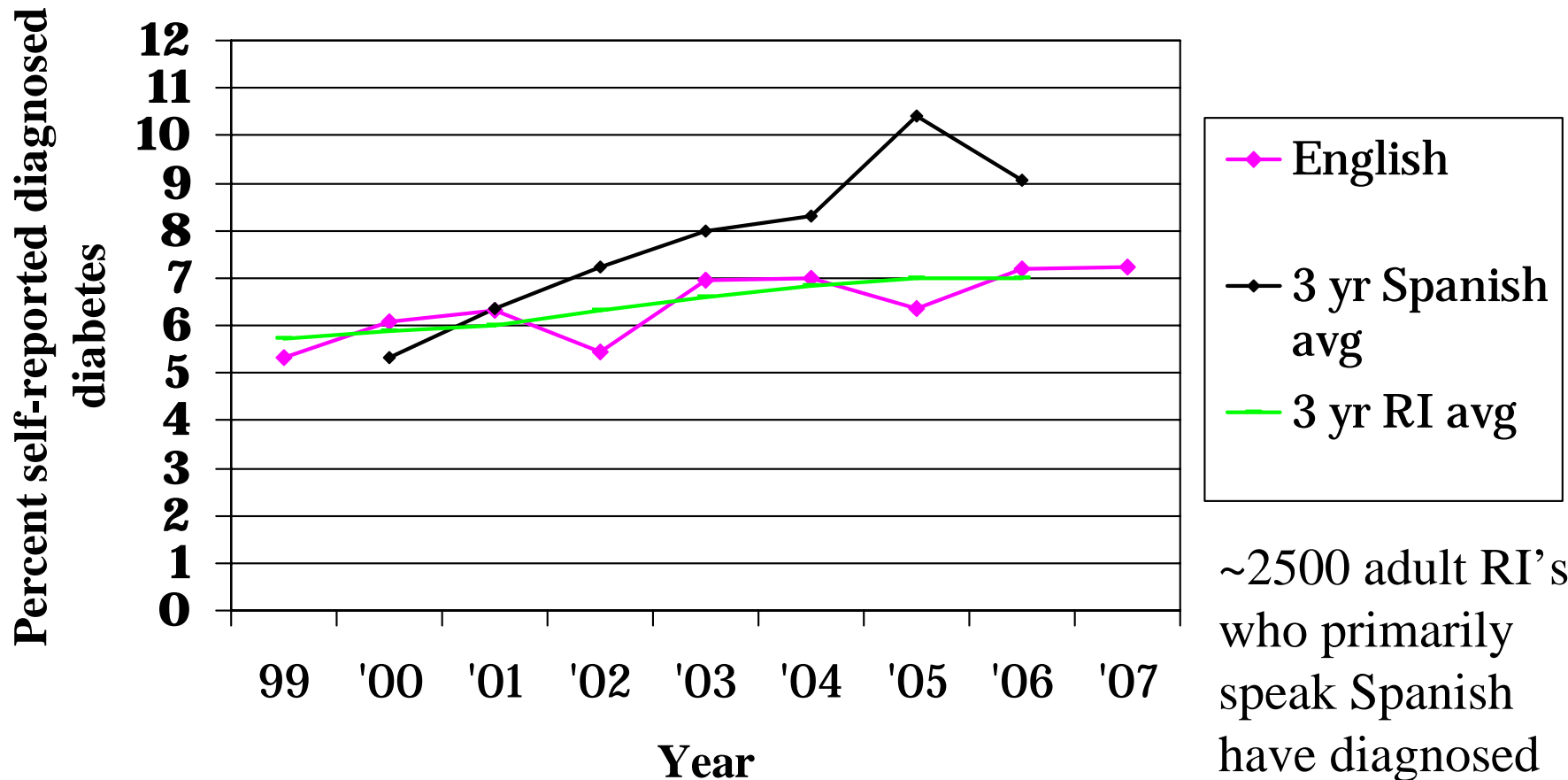
~2,000 adult Black/African American RI's have diagnosed diabetes.

# Trend of Diabetes among RI Adults by Ethnicity



~4,500 adult Hispanic RI's have diagnosed diabetes.

# Trend of Diabetes among RI Adults by language

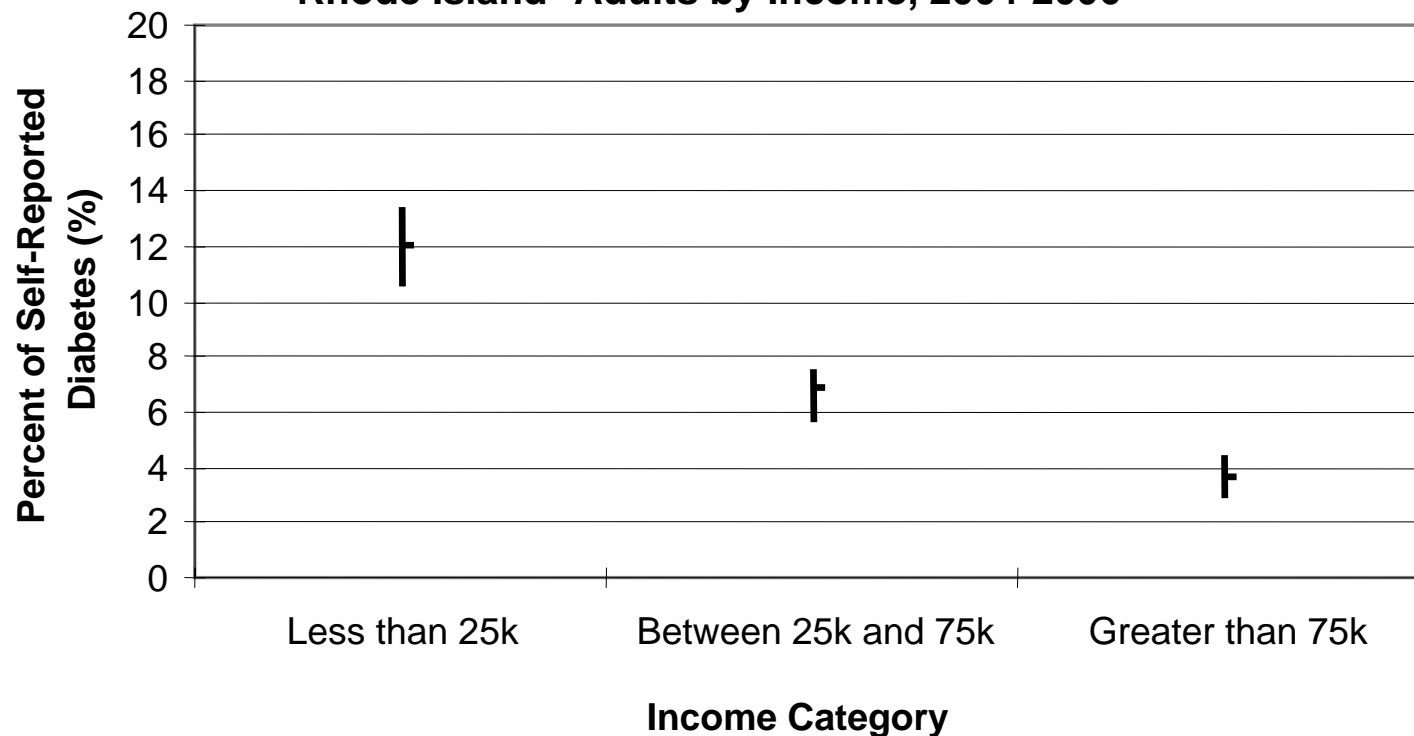


~2500 adult RI's who primarily speak Spanish have diagnosed diabetes.

# Prevalence of Diagnosed Diabetes by Income

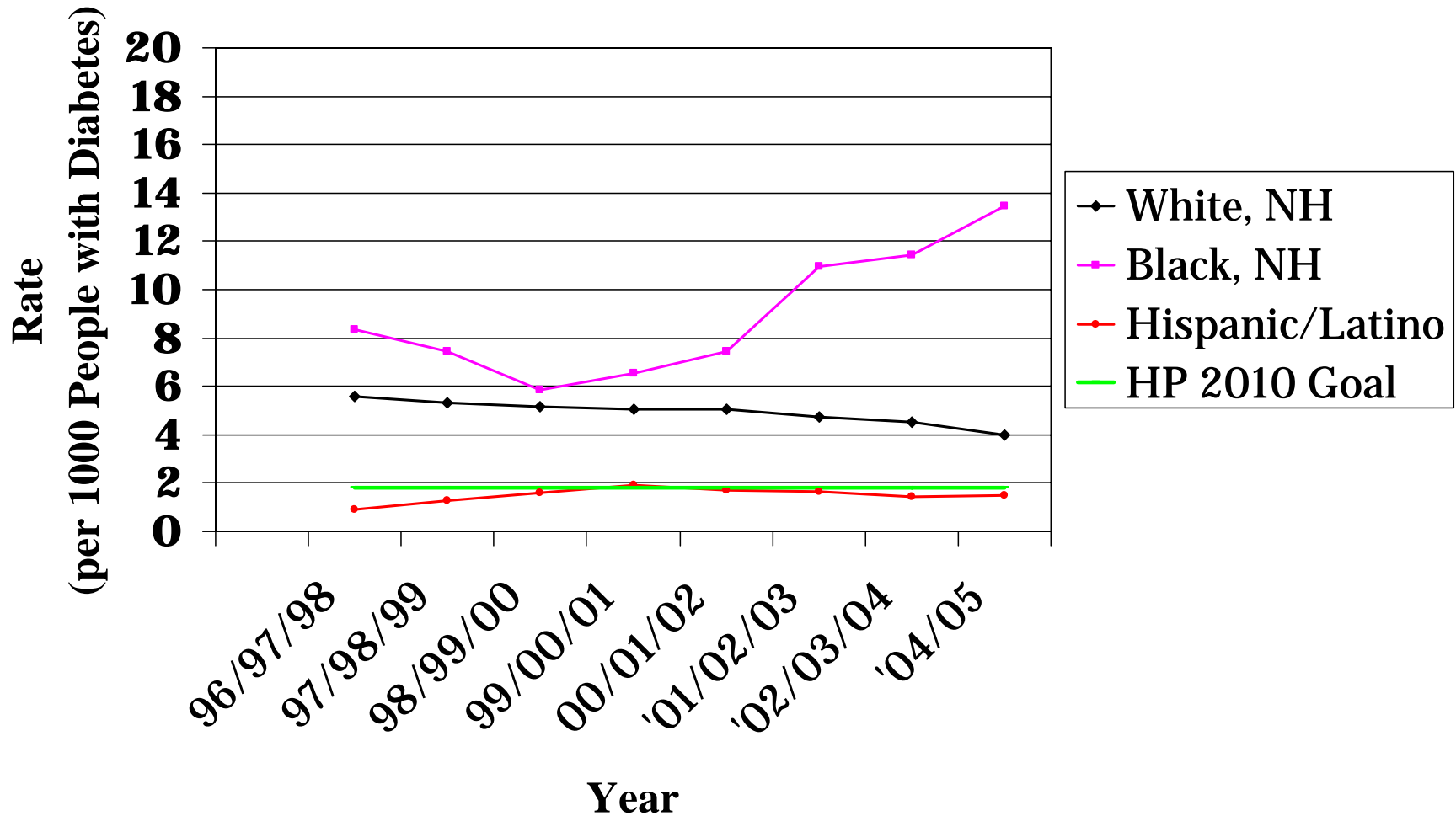


**Figure 4: Prevalence of Diagnosed Diabetes Among Rhode Island\* Adults by Income, 2004-2006**



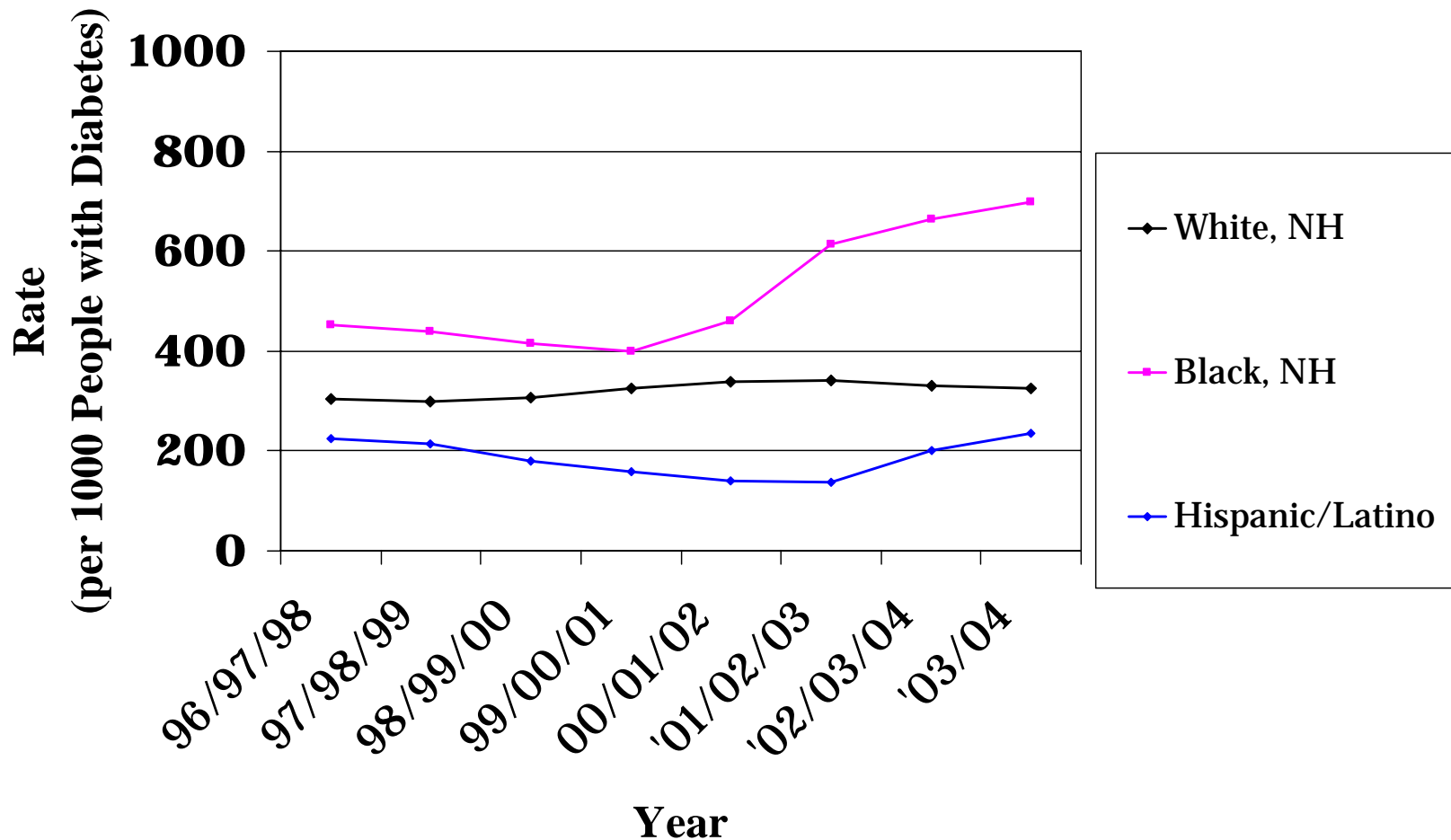
~12,000 adult RI's with an income < 25k have diagnosed diabetes.

# Age-adjusted Hospital Discharge Rates for NTLEA as First-Listed Diagnosis and Diabetes as any other Diagnosis



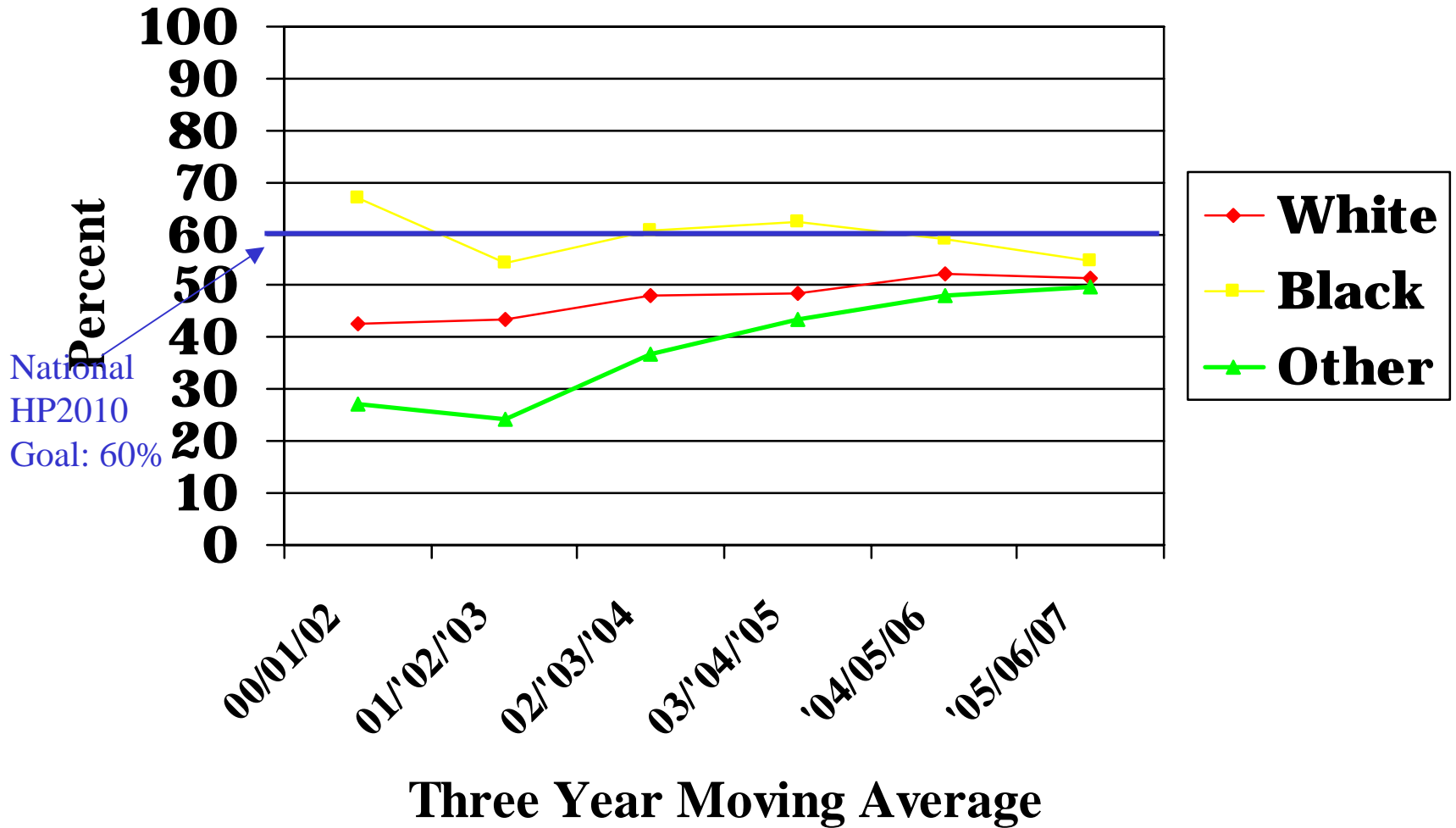
Data Sources: RI Hospital Discharge data and RI BRFSS

# Age-adjusted Discharge Rate for Db as Any Discharge

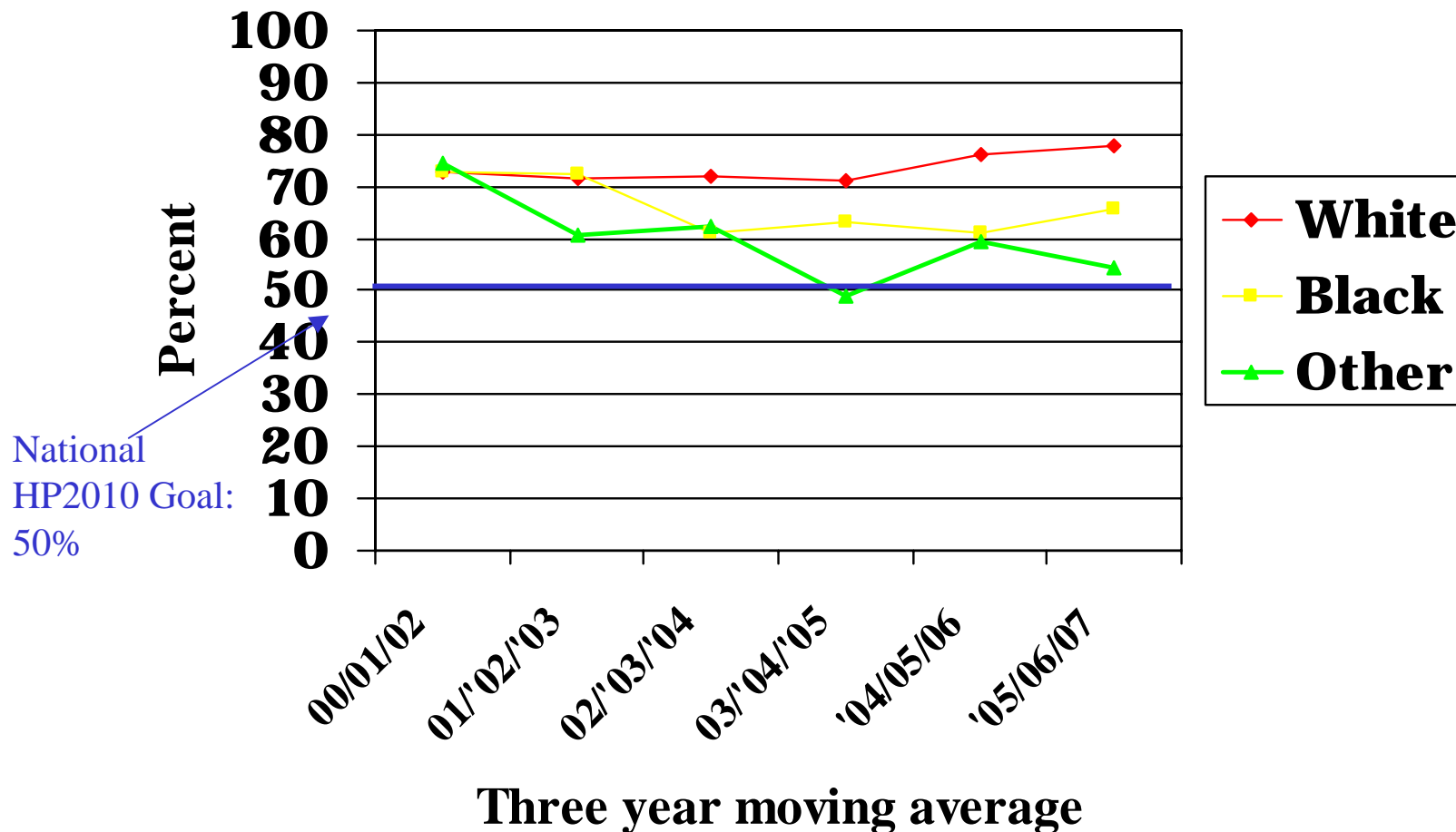


Data Sources: RI Hospital Discharge data and RI BRFSS

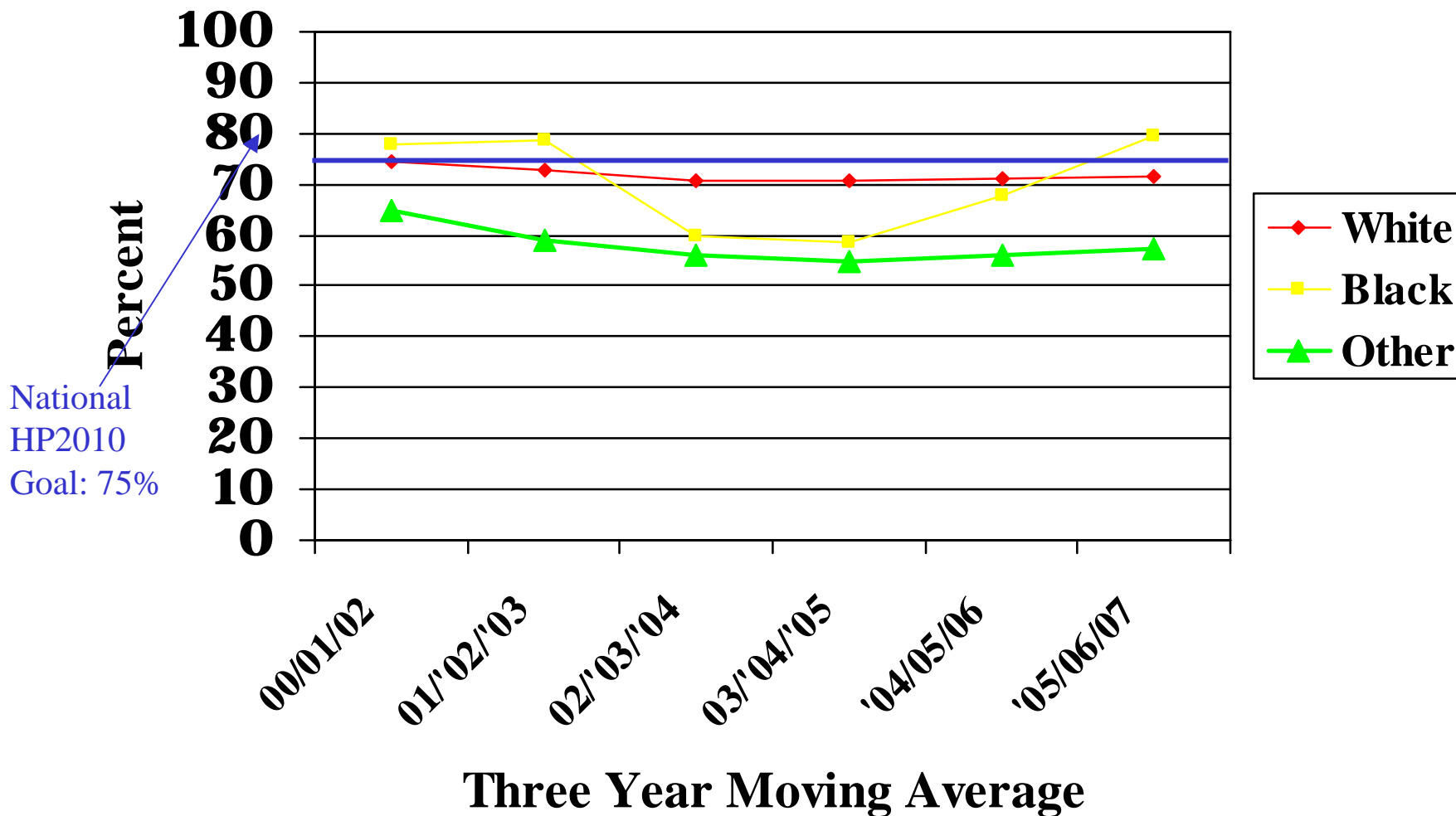
# Diabetes Outpatient Education



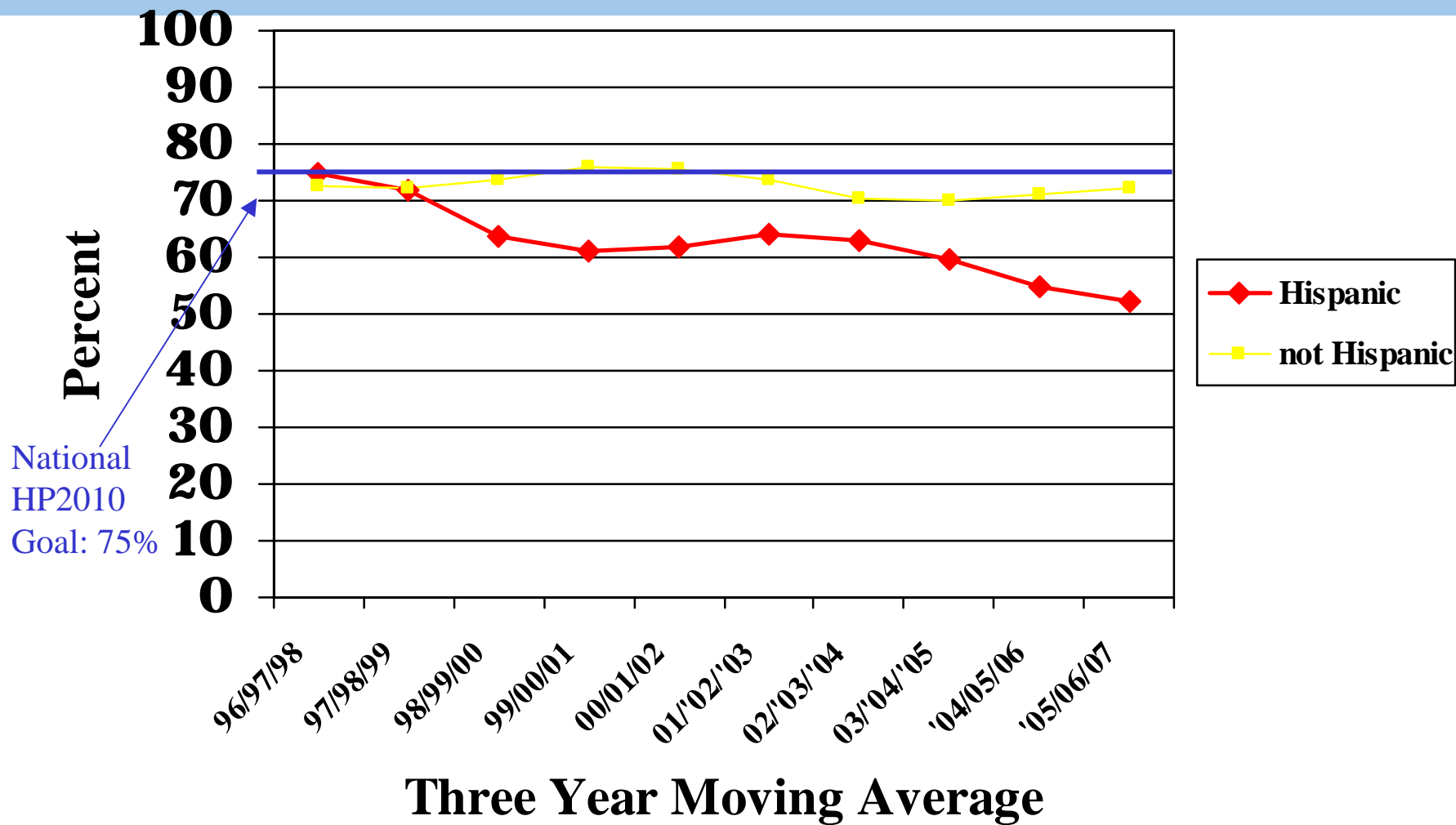
# At least one Hemoglobin A1c



# Annual Foot Exam



# Annual Foot Exam by Ethnicity



# Summary



- Diabetes is increasing in RI
- Higher prevalence of diabetes
  - Racial and Ethnic minorities
  - Spanish as primary language
  - Lower income
- Racial and Ethnic minorities have greater rate of serious outcomes due to diabetes
- Racial and Ethnic minorities receive fewer clinical preventive services, but improving



**Annie Gjelsvik**

Diabetes Prevention and Control Program

401.222.5119

[Annie.Gjelsvik@health.ri.gov](mailto:Annie.Gjelsvik@health.ri.gov)

[www.health.ri.gov](http://www.health.ri.gov)